

# Tweaking Toolbox for Windows

**Tweaking Toolbox for Windows**  
Copyright © 1998-1999 by Graphic Locomotion

Programming, research and art work by: Ben Jos Walbeehm  
Help file, marketing, research and art work by: Arie Slob

<http://www.graphic-locomotion.com/graphics/tw.html>  
<http://www.windows-help.net/tw/>  
[tw@windows-help.net](mailto:tw@windows-help.net)

## Introduction

Tweaking Toolbox for Windows (TTW) is a utility that helps you to customise your Windows 95/98 and Windows NT (4.0 and higher) interface, by configuring and personalising its look and feel. The easy to use interface lets you configure dozens of hidden Windows settings from the Start Menu, Desktop, Control Panel, MS-DOS prompt, Internet Explorer, Outlook Express and many more. For a complete overview, see the chapter [Functions](#).

Prior to TTW, the only way to change these Windows settings was to manually edit the registry. This is not only a time-consuming task but also a very risky endeavour for the untrained novice.

TTW is the only 100% foolproof method to change these settings. It's fast, it's easy to use, it's incredibly efficient and highly cost effective. TTW works for all versions of Windows 95 / 98, Windows NT 4.0 and higher, as well as every language version.

## Contents:

- [Operating System Support](#)
- [Functions](#)
- [Menu bar](#)
- [Uninstalling](#)
- [How to Register](#)
- [Credits](#)
- [Version History](#)
- [Support](#)

## Licence terms and Disclaimer:

Tweaking Toolbox for Windows is shareware. You may evaluate it for a period of 30 days at no charge. If you decide you to continue using it after this time, you must register it. Registered users will be able to download free or discounted updates and are entitled to technical support via e-mail.

The following terms apply to both the shareware (unregistered) and registered versions of Tweaking Toolbox for Windows:

- Tweaking Toolbox for Windows may not be sold or resold in any way, including, but not limited to, selling it

as part of a permanent sale of the computer system it is installed on.

- Tweaking Toolbox for Windows may not be distributed as part of any commercial package.
- Tweaking Toolbox for Windows may not be used in a commercial environment, used or distributed in support of a commercial service, or used or distributed to support any kind of profit-generating activity, even if it is being distributed freely.
- All files must remain intact and unmodified from the original as distributed by Graphic Locomotion and Windows-Help.NET.
- Including Tweaking Toolbox for Windows as part of a shareware distribution, magazine, book, CD-ROM, or similar medium requires written permission of the authors.

You are granted the right to distribute the shareware (unregistered) version of Tweaking Toolbox for Windows in accordance with, but not limited to, the above terms. You are not allowed to distribute the registered version of Tweaking Toolbox for Windows in any way.

In addition to the above terms, the registered version of Tweaking Toolbox for Windows is subject to the following terms and conditions:

- You may only install and use one copy of Tweaking Toolbox for Windows; installing and using more than one copy requires you to purchase the corresponding number of copies of Tweaking Toolbox for Windows.
- Tweaking Toolbox for Windows may not be installed, accessed, displayed, run, shared or used concurrently on or from different computers, including a workstation, terminal, or any other digital electronic device.
- You may make a single backup copy of Tweaking Toolbox for Windows. This backup copy may only be used for archival purposes.
- On computer systems running more than one operating system, you may install at most one copy on each operating system, but these copies may not be used simultaneously.
- Tweaking Toolbox for Windows is only licensed as a whole; its component parts may not be separated for use on more than one computer.
- Renting, leasing, or lending Tweaking Toolbox for Windows is not allowed.
- Without prejudice to any other rights, Graphic Locomotion or Windows-Help.NET may terminate this agreement if you fail to comply with any of its terms and conditions. In such an event, you must destroy all copies and all component parts of Tweaking Toolbox for Windows.

Tweaking Toolbox for Windows is provided “as-is” without warranty of any kind, either express or implied, including but not limited to the implied warranties of merchantability and fitness for a particular purpose. In no event shall the authors be liable for any damages whatsoever including direct, indirect, incidental, consequential, loss of business profits, or special damages, even if the authors have been advised of the possibility of such damages.

Tweaking Toolbox for Windows is protected by United States copyright law and international treaty provisions, as well as other intellectual property laws and treaties. Modifying, reverse engineering, translating, or disassembling of this product, in whole or in part, including the program and all its documentation, is strictly prohibited.

Microsoft, MS-DOS, Internet Explorer and Windows 95/98/NT are trademarks of Microsoft Corporation (which is a trademark in and of itself). Other trademarks are property of their respective owners.

## Tweaking Toolbox for Windows Operating System Support

S = Shareware Version (Unregistered) R = Registered Version X = not available

\*Note that IE4.x also applies to subsequent versions of IE.

Feature	Win 95	Win95 + IE 4.x *	Win 98	WinNT
<a href="#">Registered user</a>	S	S	S	S
<a href="#">Registered organisation</a>	S	S	S	S
<a href="#">Name for MS software setup</a>	S	S	S	S
<a href="#">Company for MS software setup</a>	S	S	S	S
<a href="#">Windows installation files</a>	R	R	R	R
<a href="#">Fix optimised File System settings</a>	R	R	X	X
<a href="#">Current name of the Recycle Bin</a>	R	R	R	R
<a href="#">Show "Rename" on Recycle Bin's context menu</a>	S	S	S	S
<a href="#">Show Recycle Bin</a>	S	S	S	S
<a href="#">Show Network Neighborhood</a>	S	S	S	S
<a href="#">Show all Icons on the desktop</a>	R	R	R	R
<a href="#">Save settings on exit</a>	S	S	S	S
<a href="#">Show/Hide Favorites Menu</a>	X	R	R	R
<a href="#">Show/Hide Documents Menu</a>	X	R	R	R
<a href="#">Show/Hide Find Menu</a>	S	S	S	S
<a href="#">Show/Hide Run Menu</a>	S	S	S	S
<a href="#">Show/Hide Log Off &lt;user name&gt;</a>	X	R	R	R
<a href="#">Shut Down</a>	S	S	S	S
<a href="#">Taskbar &amp; Start Menu (on the Settings menu)</a>	R	R	R	R
<a href="#">All folders on the Settings menu</a>	R	R	R	R
<a href="#">"Click here to begin" animation</a>	S	S	S	S
<a href="#">Menu speed</a>	S	S	S	S
<a href="#">IE title bar</a>	S	S	S	S
<a href="#">OE title bar</a>	X	S	S	S
<a href="#">OE data files</a>	X	R	R	R
<a href="#">OE splash screen</a>	X	S	S	S
<a href="#">Display Control Panel</a>	S	S	S	S
<a href="#">Appearance tab</a>	S	S	S	S
<a href="#">Background tab</a>	S	S	S	S
<a href="#">Plus!/Effects tab</a>	S	S	S	S

<u>Screen Saver tab</u>	S	S	S	S
<u>Settings tab</u>	S	S	S	S
<u>Web tab</u>	S	S	S	S
<u>Password Control Panel</u>	R	R	R	X
<u>Change Passwords tab</u>	R	R	R	X
<u>Users Control Panel</u>	X	S	S	X
<u>Device Manager tab</u>	S	S	S	X
<u>File System button</u>	S	S	S	X
<u>Virtual Memory button</u>	S	S	S	X
<u>Control Panel (more)</u>	S	S	S	S
<u>Add/Remove</u>	S	S	S	S
<u>MS-DOS Prompt</u>	R	R	R	X
<u>Single-Mode MS-DOS</u>	R	R	R	X
<u>Windows Update accessible</u>	X	X	S	X
<u>Task Monitor settings</u>	X	X	R	X
<u>WinVer</u>	S	S	S	S
<u>Explorer tips</u>	S	S	S	S
<u>Special folders</u>	S	S	S	S
<u>Information</u>	S	S	S	S
<u>Settings</u>	S	S	S	S

When having a machine configured with user profiles, these settings are **user specific**:

- The **Enable renaming of the Recycle Bin** on the **Desktop** tab
- All settings on the **Start menu** tab
- The **OE data files** and **OE splash screen** on the **IE and OE** tab
- All settings on the **Control Panel** tab
- Both settings on the **MS-DOS** tab

Although you will see the text “**Note: This requires a restart of Windows for the changes to take effect**” on several occasions, when you change a setting which requires a restart of Windows, you will get a warning when exiting the program, asking you to restart Windows.

Please note that if you close the program you will lose any changes you made if you did not press the **Apply** button, or did not use **Apply all tabs** from the **Apply/Undo** menu.

## Functions

### General Tab

- ◆ Registered user
- ◆ Registered organisation
- ◆ Name for MS software setup
- ◆ Company for MS software setup
- ◆ Windows installation files
- ◆ Fix optimised File System settings

### Desktop Tab

- ◆ Current name of the Recycle Bin
- ◆ Show "Rename" on Recycle Bin's context menu
- ◆ Show Recycle Bin
- ◆ Show Network Neighborhood
- ◆ Show all icons on the desktop
- ◆ Save settings on exit

### Start menu Tab

- ◆ Favorites (IE 4.0+)
- ◆ Documents (IE 4.0+)
- ◆ Find
- ◆ Run
- ◆ Log Off <username> (IE 4.0+)
- ◆ Shut Down
- ◆ Taskbar & Start Menu (on the Settings menu)
- ◆ All folders on the Settings menu
- ◆ "Click here to begin" animation
- ◆ Menu speed

### IE and OE Tab

- ◆ IE title bar
- ◆ OE title bar
- ◆ OE data files
- ◆ OE splash screen

### Control Panel Tab

#### Display Properties

- ◆ Display Control Panel
- ◆ Appearance tab
- ◆ Background tab
- ◆ Plus!/Effects tab
- ◆ Screen Saver tab
- ◆ Settings tab

- ◆ Web tab
- ◆ **Passwords Properties**
- ◆ Password Control Panel
- ◆ Change Passwords tab
- ◆ **Users Properties**
- ◆ Users Control Panel
- ◆ **System Properties**
- ◆ Device Manager tab
- ◆ File System button
- ◆ Virtual Memory button

### **Control Panel (more)**

- ◆ Control Panel (more)

### **Add/Remove**

- ◆ Add/Remove

### **MS-DOS Tab**

- ◆ MS-DOS Prompt
- ◆ Single-Mode MS-DOS

### **Windows 98 Tab**

- ◆ Windows Update accessible
- ◆ Task Monitor settings

### **WinVer Tab**

- ◆ WinVer

### **Explorer tips Tab**

- ◆ Explorer tips

### **Information Tab**

- ◆ Information

### **Settings Tab**

- ◆ Settings

### **Special folders Tab**

- ◆ Special folders

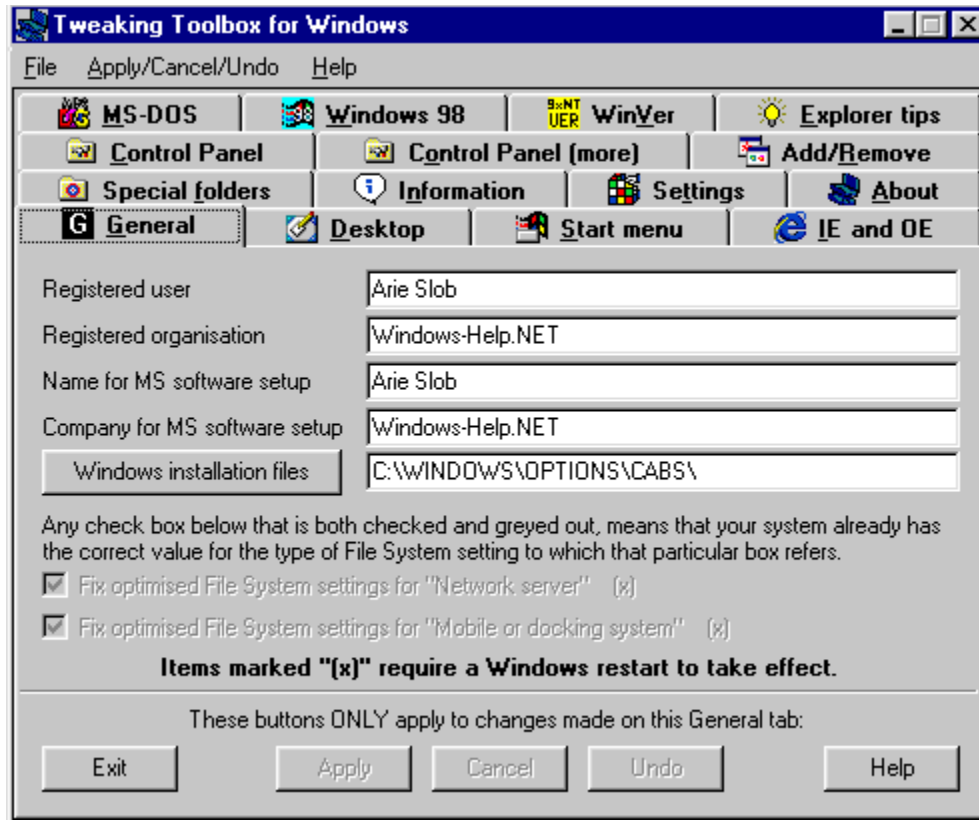
Please note that if you close the program you will lose any changes you made if you did not press the **Apply** button, or did not use **Apply all tabs** from the **Apply/Cancel/Undo** menu.

When having a machine configured with user profiles, these settings are **user specific**:

- The **Enable renaming of the Recycle Bin** on the **Desktop** tab
- All settings on the **Start menu** tab
- The **OE data files** and **OE splash screen** on the **IE and OE** tab
- All settings on the **Control Panel** tab
- Both settings on the **MS-DOS** tab

Although you will see the text “**Note: This requires a restart of Windows for the changes to take effect**” on several occasions, when you change a setting which requires a restart of Windows, you will get a warning when exiting the program, prompting you to restart Windows.

## General tab

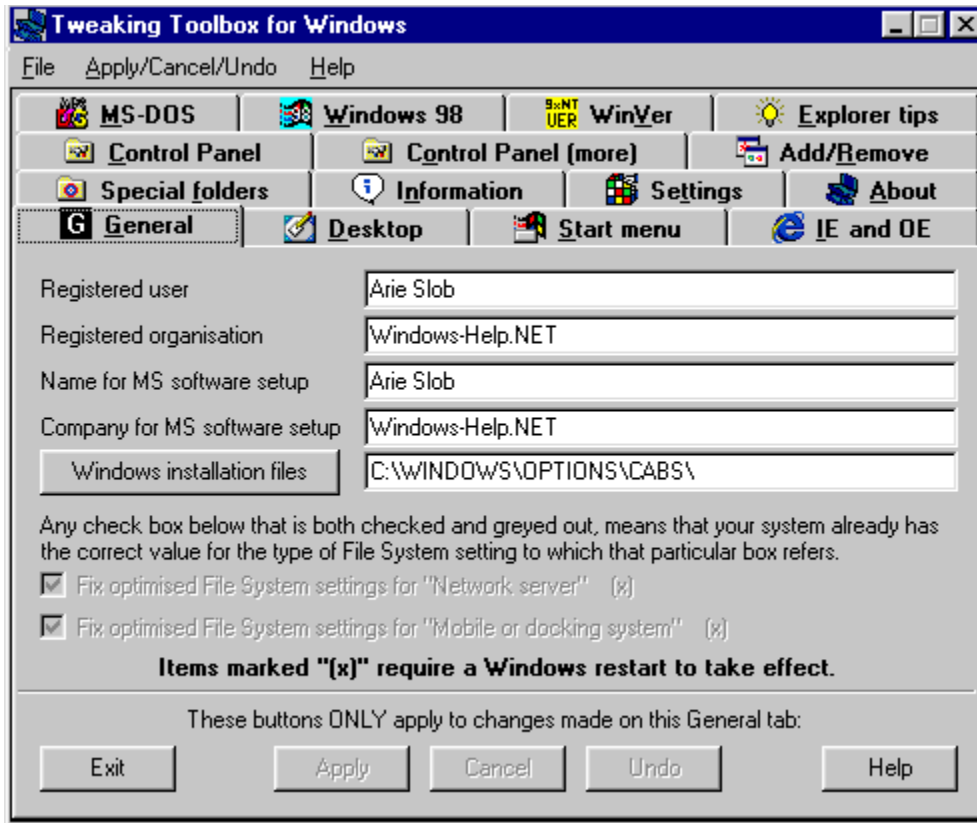


On the General tab, you can change the [Registered user](#), [Registered organisation](#), the [Name for MS software setup](#) and [Company for MS software setup](#). You can also change the path to the [Windows installation files](#).

If run on a Windows 95 (Original or OSR 1) OS, you can also [Fix optimised File System settings](#), which fixes a Microsoft bug in the File System settings.



## Registered user



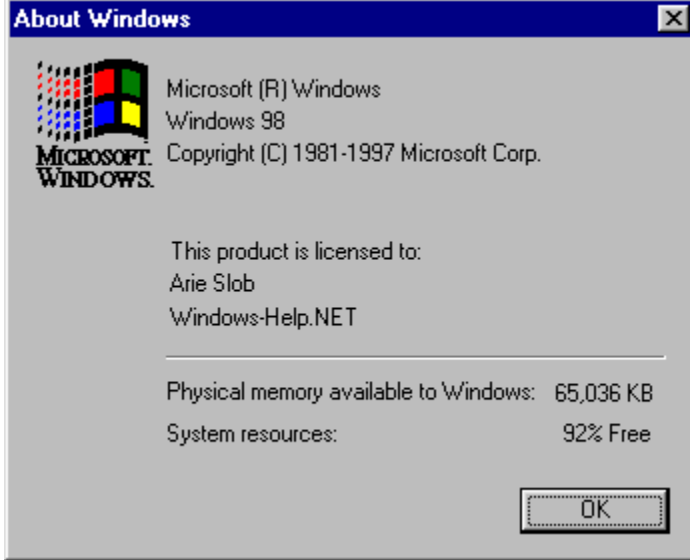
### Operating Systems:

Windows 95: Yes

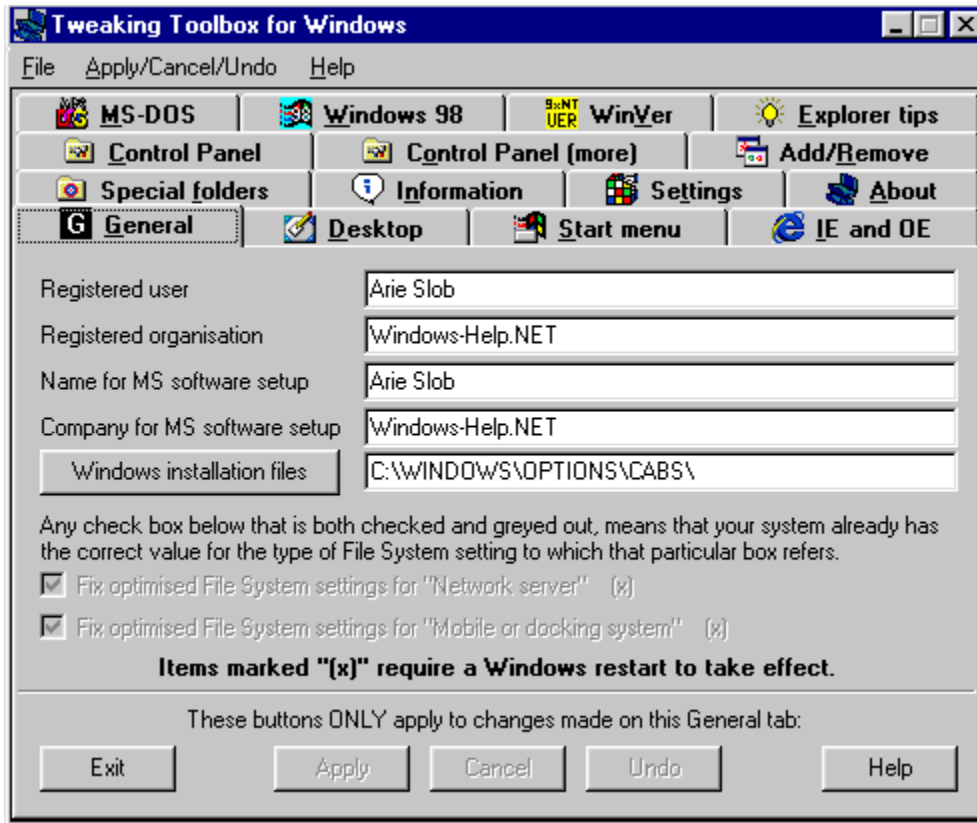
Windows 98: Yes

Windows NT: 4.0 Service Pack 3 or higher

Changes the value of the registry key that displays the username in most **Help - About** boxes (and on the **General** tab of **System Properties**) in Windows as:



## Registered organisation



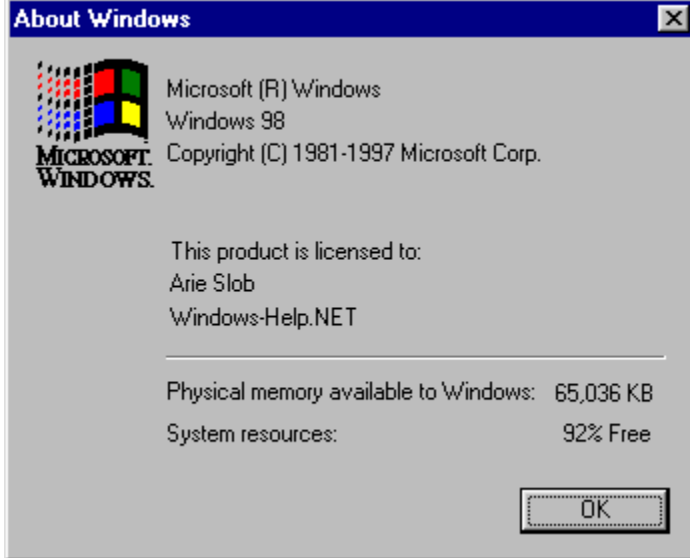
### Operating Systems:

Windows 95: Yes

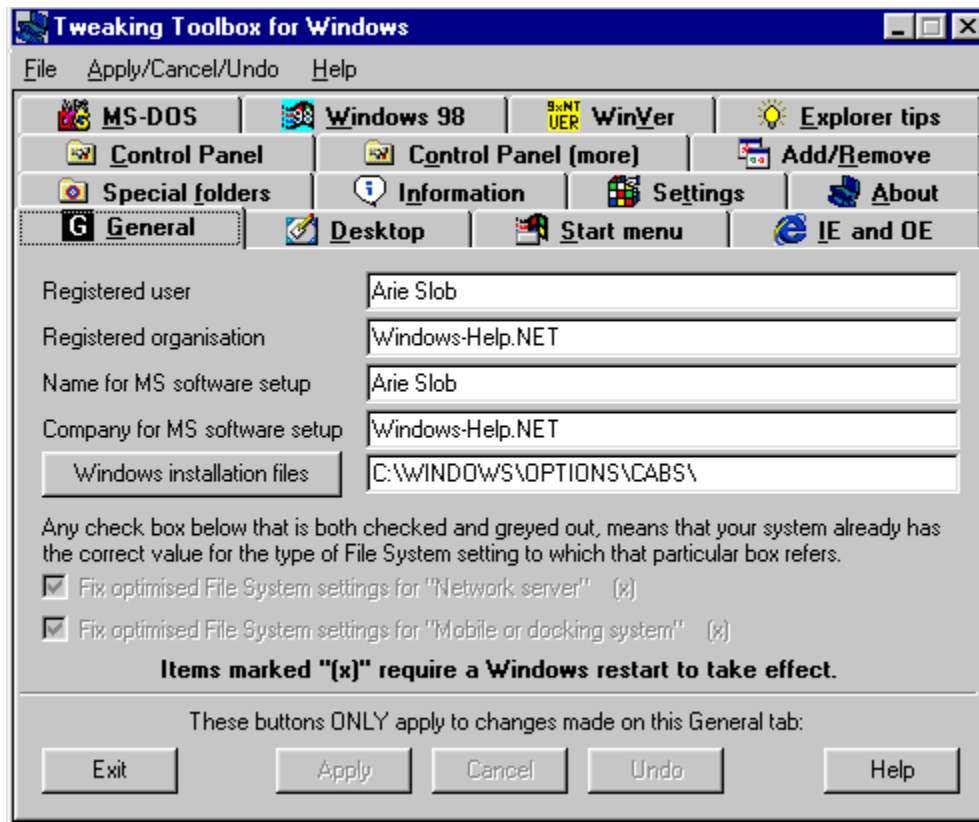
Windows 98: Yes

Windows NT: 4.0 Service Pack 3 or higher

Changes the value of the registry key that displays the organisation in most **Help - About** boxes (and on the **General** tab of **System Properties**) in Windows as:



## Name for MS software setup



### Operating Systems:

Windows 95: Yes

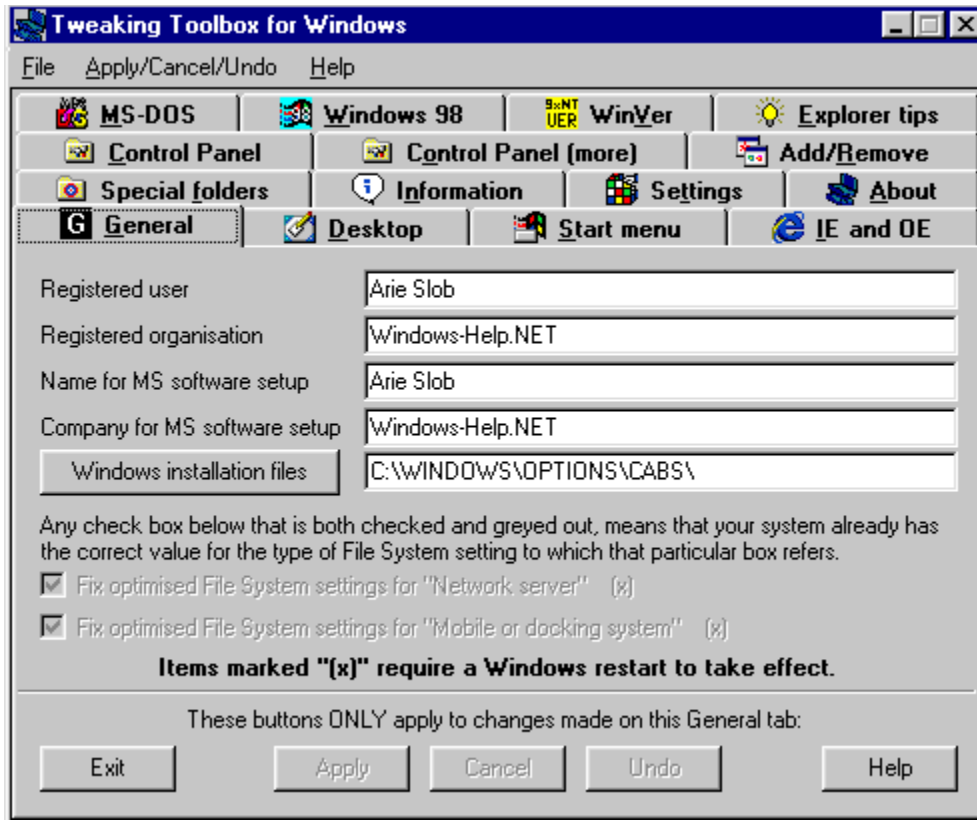
Windows 98: Yes

Windows NT: 4.0 Service Pack 3 or higher

This is the default name used by most Microsoft software as default.

If you run an installation, this name will be presented as default.

## Company for MS software setup



### Operating Systems:

Windows 95: Yes

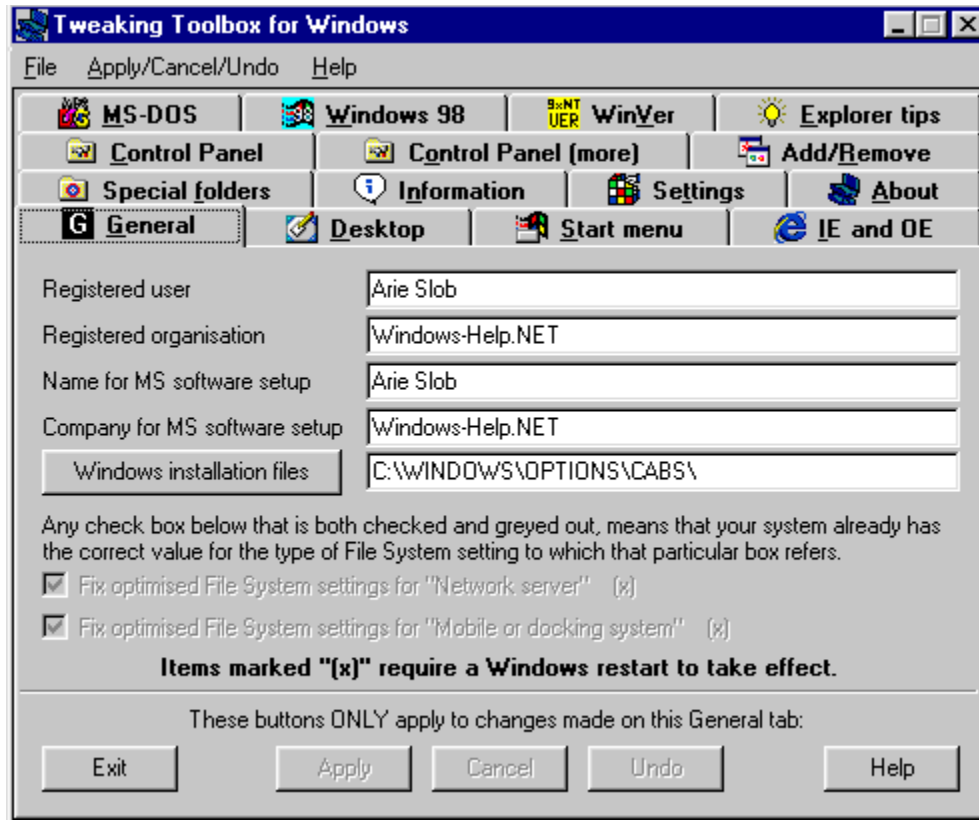
Windows 98: Yes

Windows NT: 4.0 Service Pack 3 or higher

This is the default company name used by most Microsoft software as default.

If you run an installation, this name will be presented as default.

## Windows installation files



*(registered version only)*

### Operating Systems:

Windows 95: Yes

Windows 98: Yes

Windows NT: 4.0 Service Pack 3 or higher

Changes the value of the registry key that points Windows to its installation files.

If you added a hard drive **after** having installed Windows (from CD-ROM), chances are that the drive letter of your CD-ROM drive has changed. If Windows needs to install new files from the CD-ROM, you will have to (manually) point it to the right drive.

Now you can set the new value in your registry, and Windows will not bother you again!

You can also use this feature to point to a drive/path location on a hard drive. Just copy all the Windows installation files to a hard drive (e.g. D:\WININSTALL\ ) and change the Source Path to point to this directory.

To change the Source Path, just press the **Windows installation files** button, you will be presented with a **Browse for Folder** window, what you can use to select the folder where you copied your installation files.

This has the benefit that installing from a hard drive works faster than from a CD-ROM drive. In addition, whenever you add or remove Windows components (using the Windows Setup tab of Add/Remove programs), Windows will automatically access the installation files from the hard drive without prompting you for the

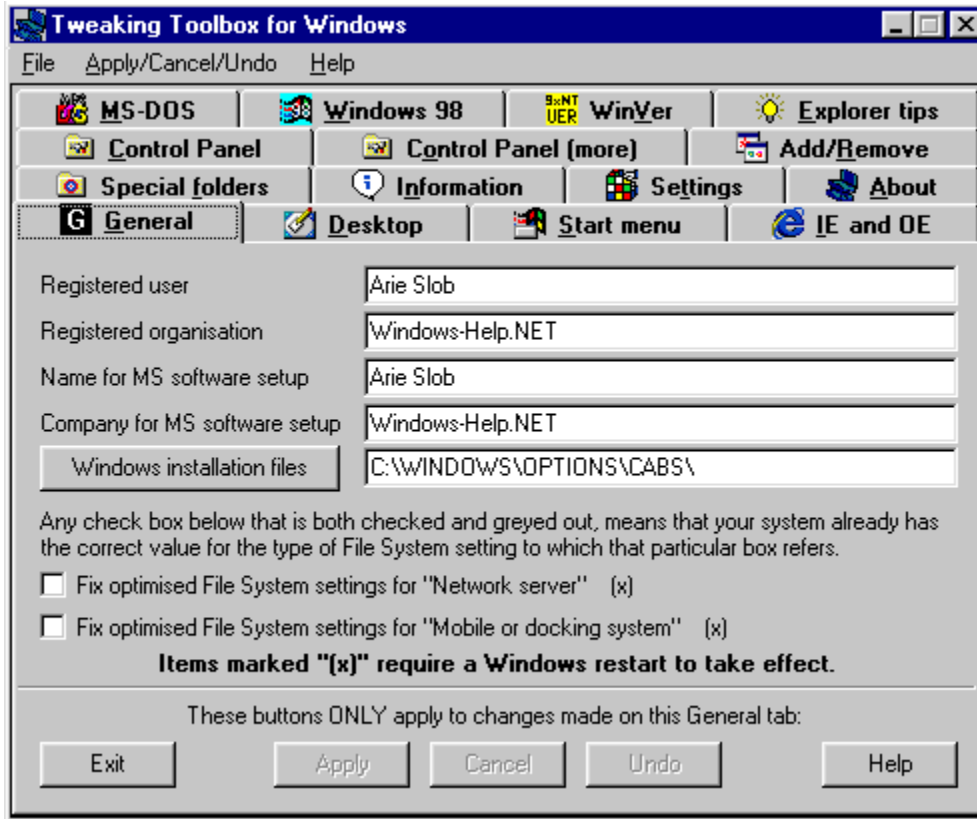
correct drive and without prompting you to insert the Windows CD-ROM.

**Tip: It is best to copy the installation files to a different hard drive than the drive that holds your operating system. If, in any event, you have to reformat the drive that holds the OS, you will still have your installation files safely on a second drive. In addition, this will save you the trouble of installing drivers to access the CD-ROM drive, since Windows does not need the CD-ROM drive during installation from hard drive.**

**Note: this item will be greyed out in the shareware version.**



## Fix optimised File System settings



*(registered version only)*

### Operating Systems:

Windows 95: Original and OSR1

Windows 98: No

Windows NT: No

Fix for Incorrect Settings for File System Performance Profiles, applies to:

- Microsoft Windows 95
- Microsoft Windows 95 OEM Service Release version 1

### Symptoms:

The performance of the file system on your computer is unchanged or degraded after you select **Network Server** or **Mobile Or Docking System** in the **Typical Role Of This Machine** box in the **File System Properties** dialogue box.

### Cause:

The **NameCache** and **PathCache** values are written to the registry incorrectly for the **Network Server** and **Mobile Or Docking System** profiles. The data for NameCache is written to the PathCache value, and the data for PathCache is written to the NameCache value.

From how the check box and the text are displayed, you can tell the state of the settings:

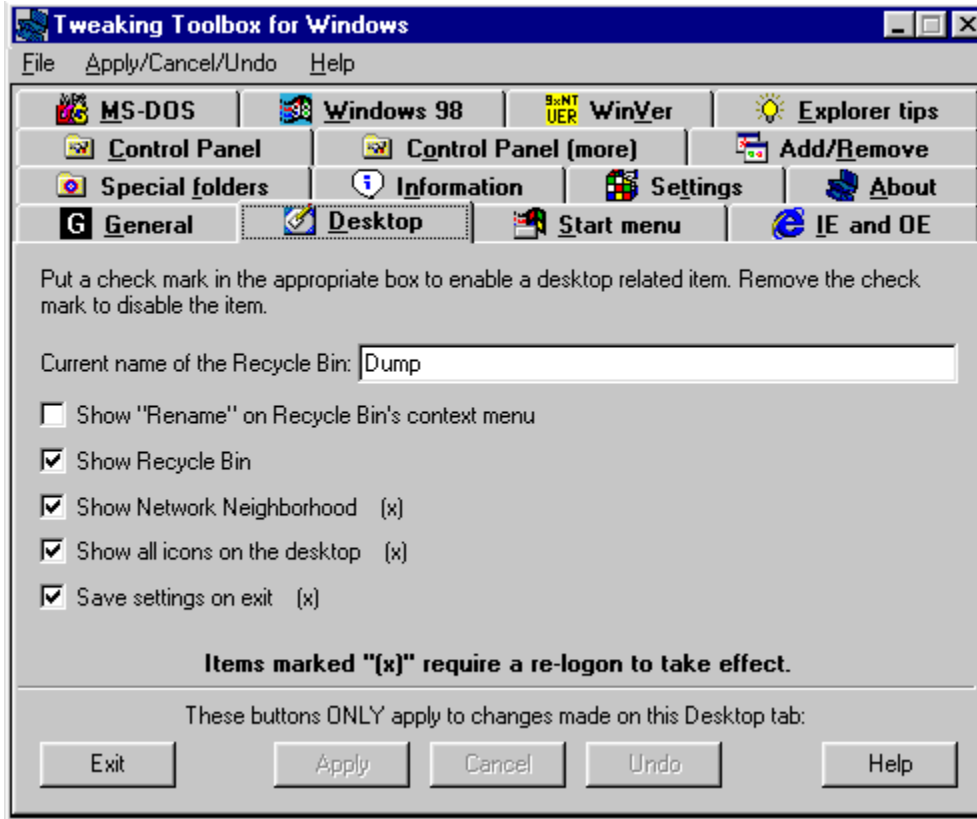
1. If the check box is checked and greyed out: the system has the correct value
2. If the check box is not checked, and the text is displayed normally, the system values are not correct

Once the values have been corrected, the check boxes will be greyed out permanently. Since **Fix optimised File System settings** is a bug fix (and not an individual customised setting), the fixed settings cannot be undone.

**Note I: This requires a Windows restart to take effect.**

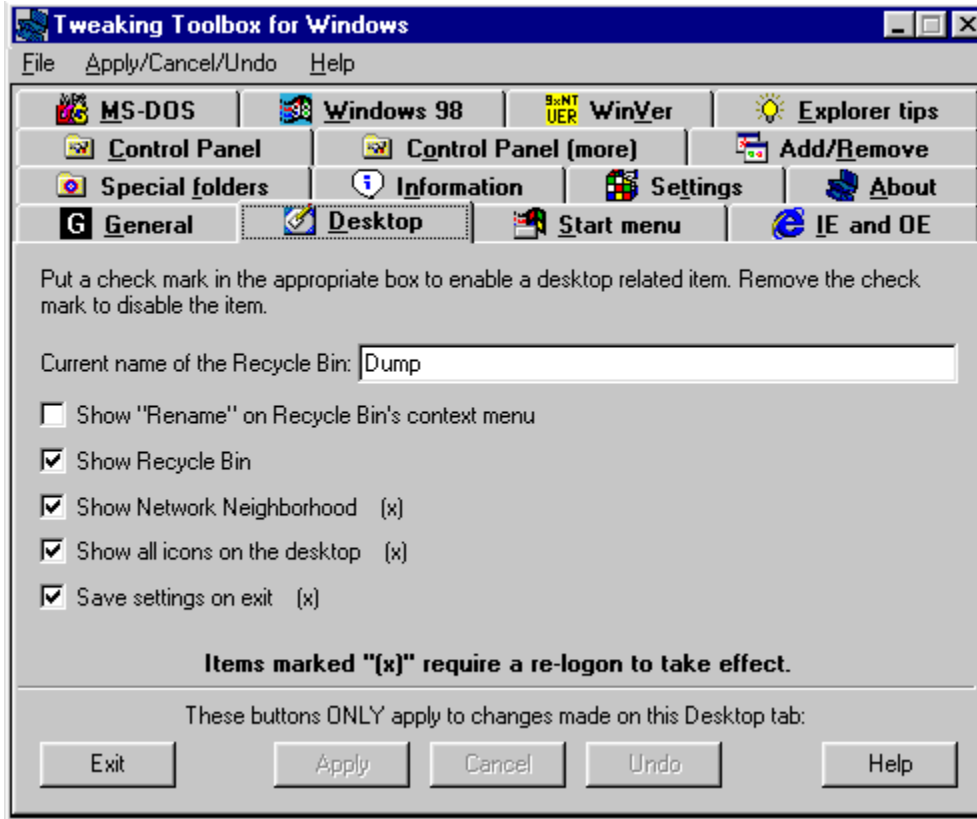
**Note II: this item will be greyed out in the shareware version.**

## Desktop tab



The Desktop tab lets you change the [Current name of the Recycle Bin](#), [Show "Rename" on Recycle Bin's context menu](#), [Show Recycle Bin](#) (or hide it) on the Desktop, [Show \(or hide\) the Network Neighborhood](#), [Show \(or hide\) all icons on the desktop](#) and [Save settings on exit](#).

## Current name of the Recycle Bin



*(registered version only)*

### Operating Systems:

Windows 95: Yes

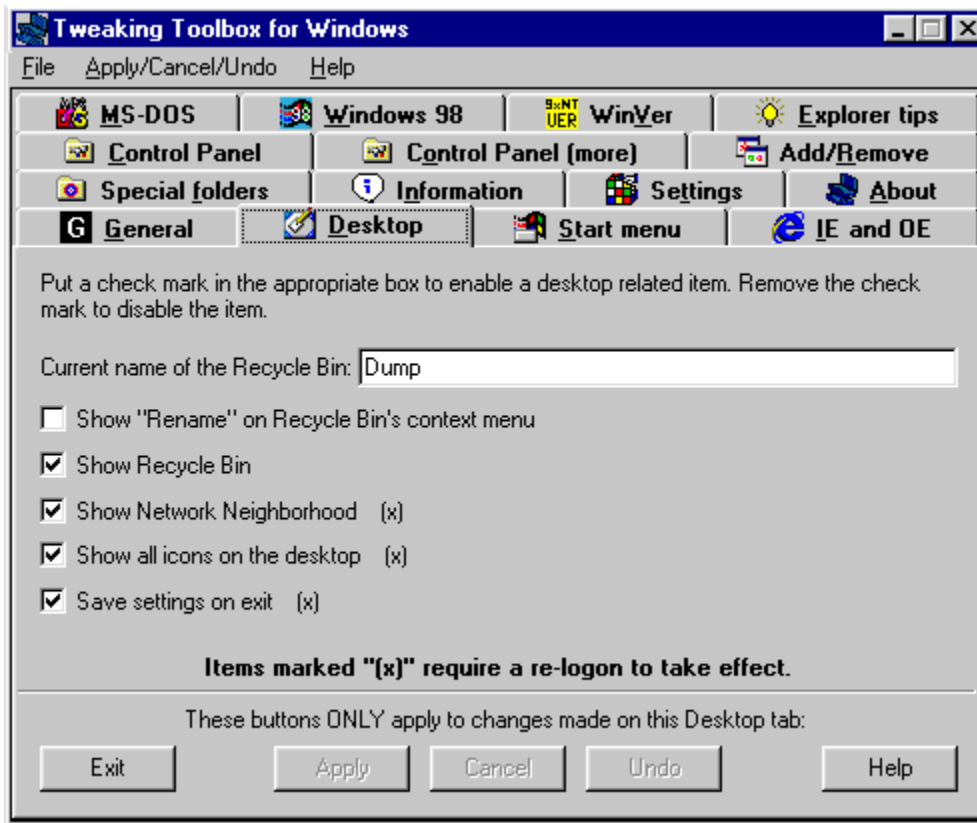
Windows 98: Yes

Windows NT: 4.0 Service Pack 3 or higher

The current name of the Recycle Bin will show in the text box, and you can type a new name for the Recycle Bin. After pressing the **Apply** button, the Recycle Bin will be renamed to the name you entered in the text box.

**Note:** It can take a few seconds before the **Recycle Bin** will show the new name.

## Show "Rename" on Recycle Bin's context menu



### Operating Systems:

Windows 95: Yes

Windows 98: Yes

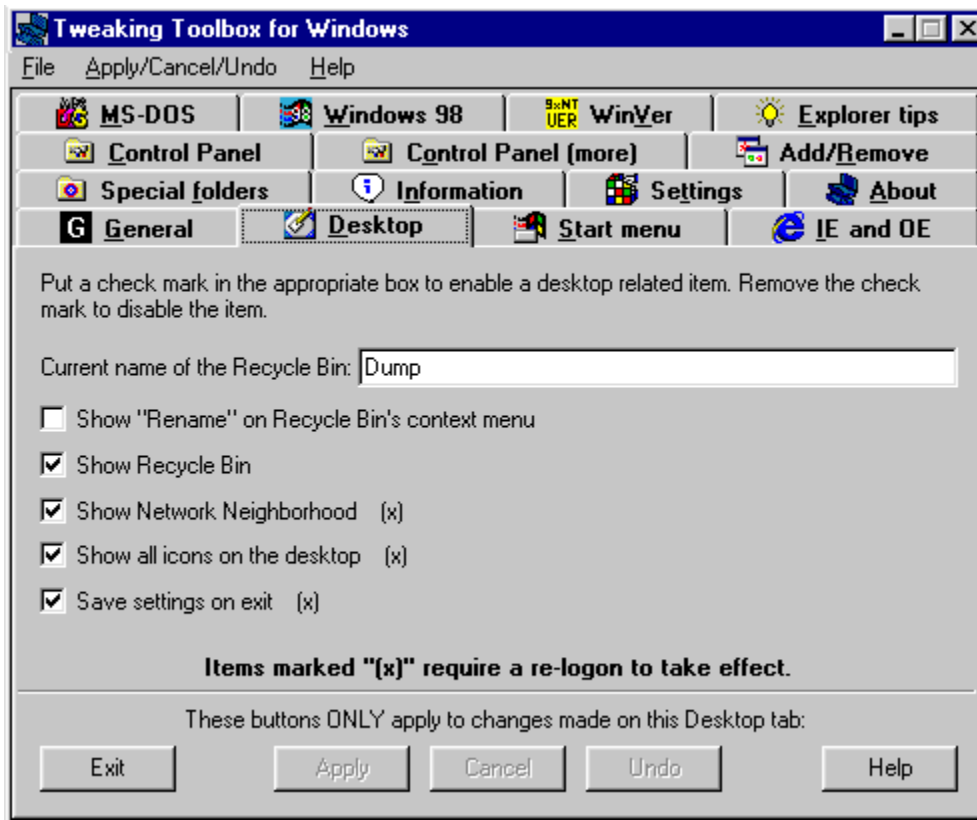
Windows NT: 4.0 Service Pack 3 or higher

When checked, a **Rename** entry will appear on the right-click shortcut menu of the Recycle Bin.

**Note:** When using **Undo** from the menu (registered version only), it will **not** rename the **Recycle Bin** back to its previous state, it will just remove the **Rename** entry on the right-click shortcut menu of the Recycle Bin.



## Show Recycle Bin



### Operating Systems:

Windows 95: Yes

Windows 98: Yes

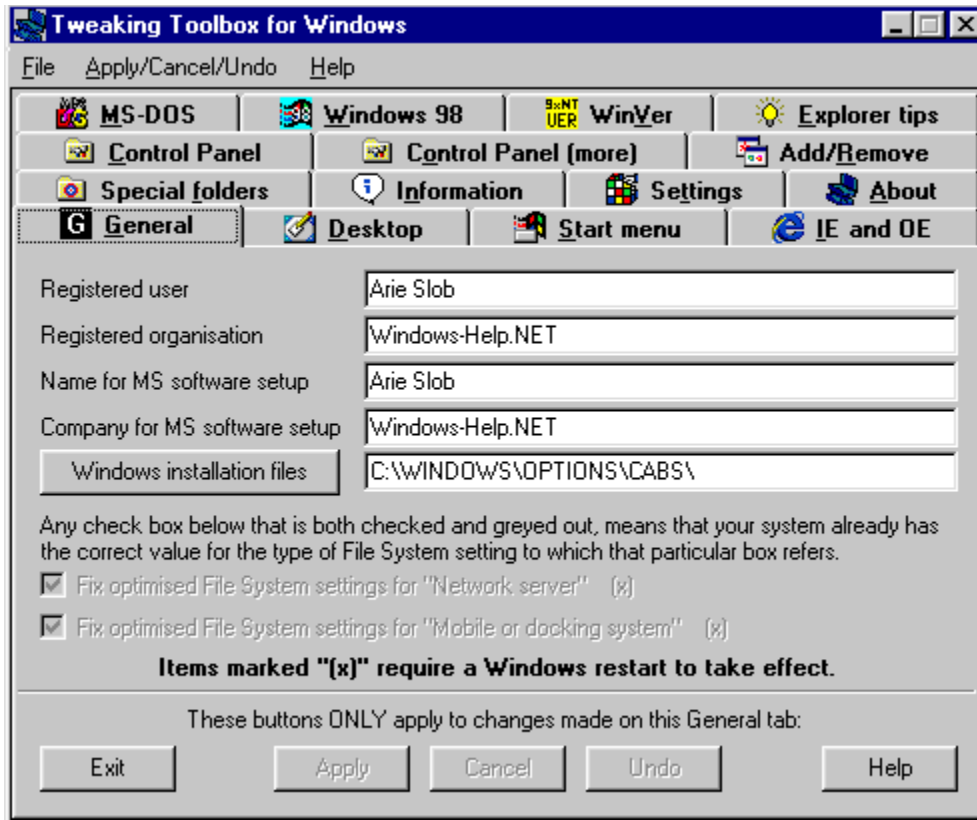
Windows NT: 4.0 Service Pack 3 or higher

When unchecked, hides the Recycle Bin on the Desktop, when checked, shows the Recycle Bin on the Desktop.

After you change the state of the checkbox, just hit **Apply**.

**Note:** It can take a few seconds before the **Recycle Bin** will be shown/hidden on the Desktop after pressing **Apply**.

## Show Network Neighborhood



### Operating Systems:

Windows 95: Yes

Windows 98: Yes

Windows NT: 4.0 Service Pack 3 or higher

When unchecked it will remove the Network Neighborhood icon from the Desktop and prevent access to Network Neighborhood.

When checked, access will be restored (and the icon will re-appear on the Desktop) as soon as you have restarted Windows.

### Consequences of hiding Network Neighborhood:

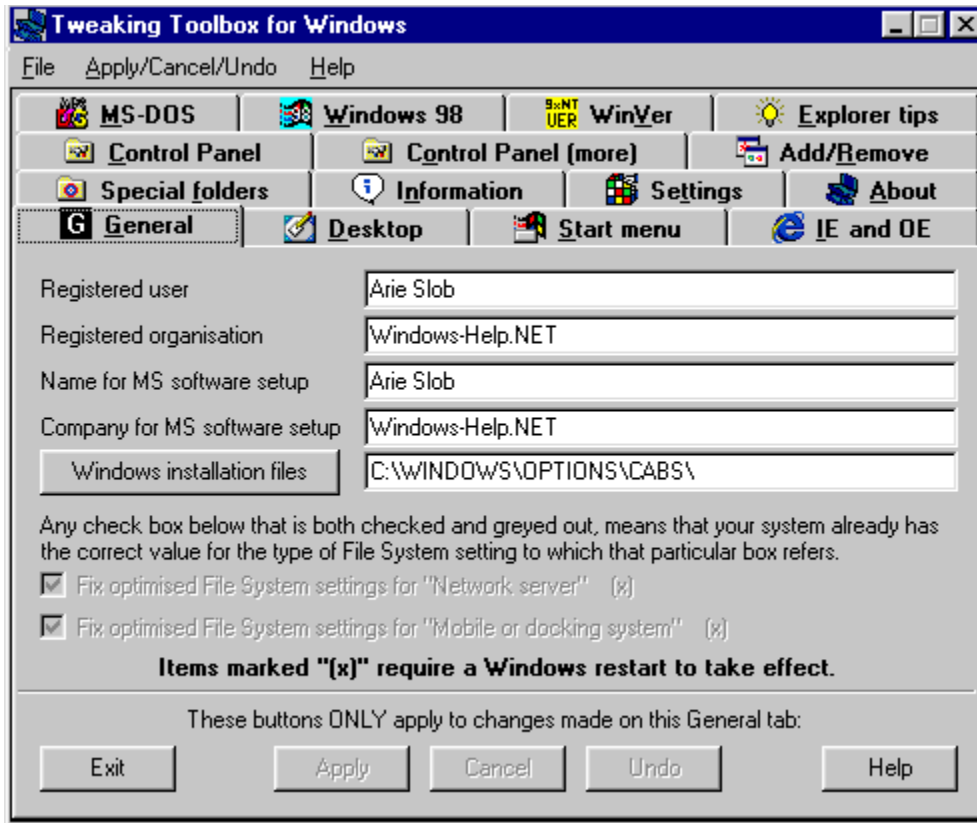
Since shell support for the Universal Naming Convention (UNC) notation is handled by the Network Neighborhood, hiding the Network Neighborhood icon will prevent Explorer from accessing resources via UNC's. In order to access network resources from Explorer, you need to map them to a drive letter. Note that the MS-DOS command prompt and other applications are not affected by this setting, because they do not use the Network Neighborhood to resolve UNC's.

In particular, hiding the Network Neighborhood prevents Direct Cable Connection from displaying the contents of the host computer. Apart from this, Direct Cable Connection functions normally.

**Note: This requires a re-logon to take effect.**



## Show all icons on the desktop



*(registered version only)*

### Operating Systems:

Windows 95: Yes

Windows 98: Yes

Windows NT: 4.0 Service Pack 3 or higher

When unchecked, hides all the icons on the Desktop.

When checked, the icons will be restored to the Desktop.

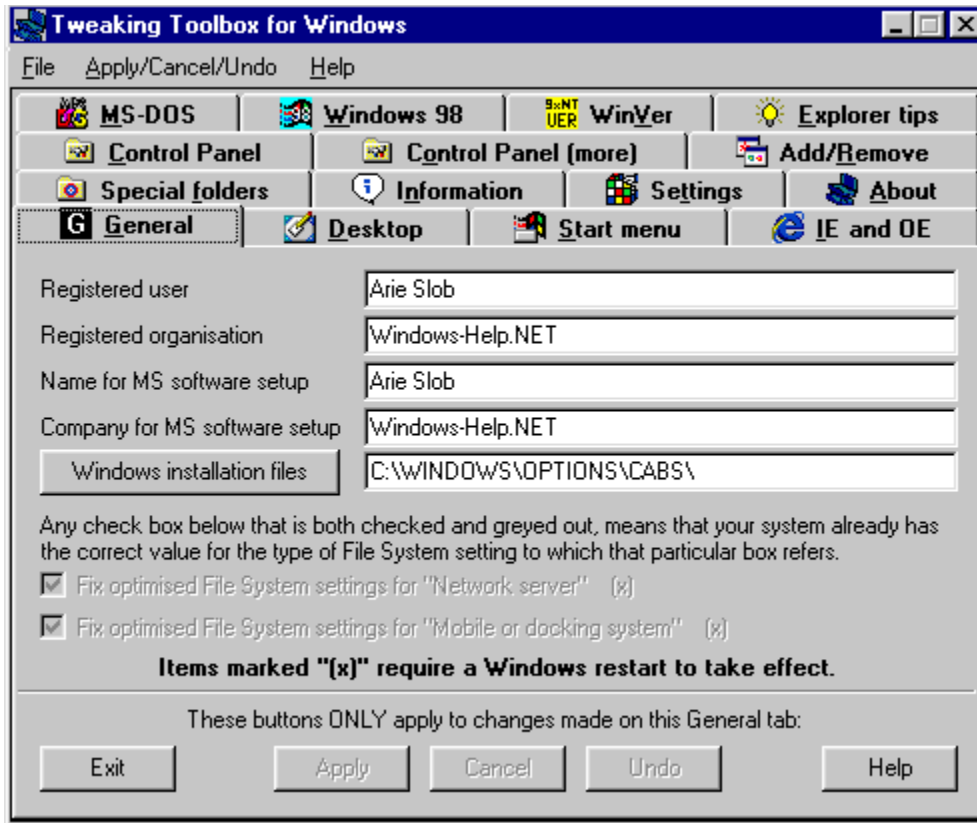
When you are using the Active Desktop (Win95 + IE4 (and higher) / Win98), this will also disable/enable the Active Desktop.

Note: This item takes precedence over the other items, e.g. if you select to show the **Network Neighborhood** on the desktop, but uncheck **Show all icons on the desktop**, no icon will be displayed.

**Note: This requires a re-logon to take effect.**

**Note: this item will be greyed out in the shareware version.**

## Save settings on exit



### Operating Systems:

Windows 95: Yes

Windows 98: Yes

Windows NT: 4.0 Service Pack 3 or higher

Removing the check mark from this item will prevent settings from being written to the file system.

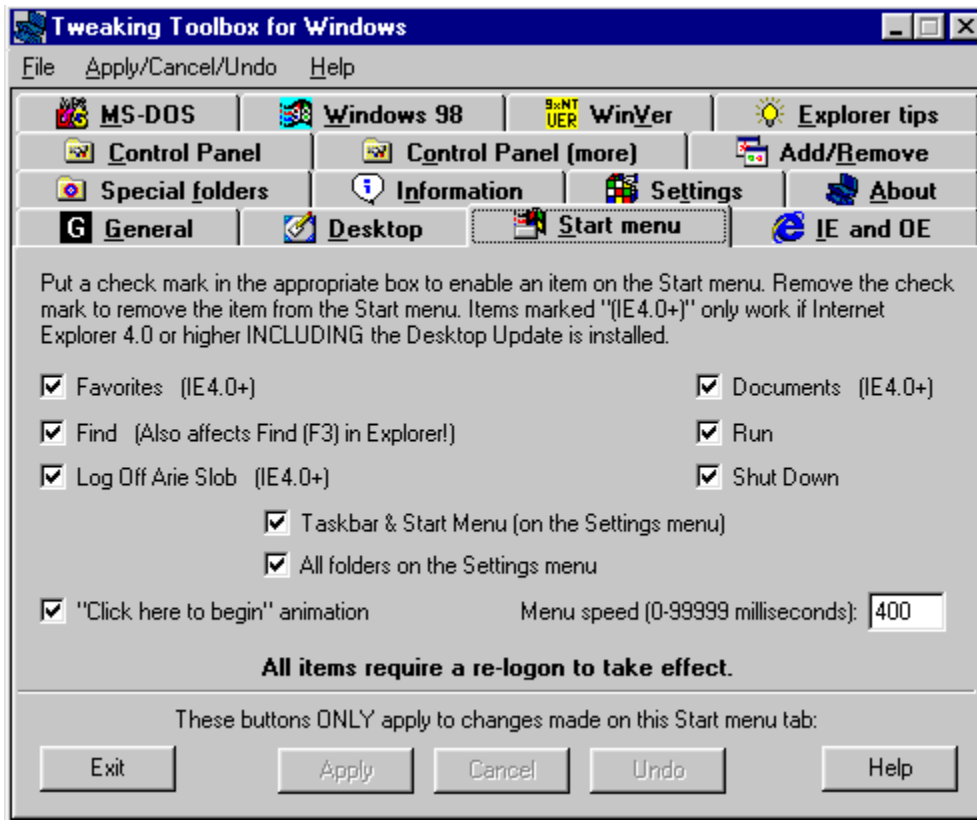
The following items are not saved when you exit Windows:

- \* Changed icon positions on the desktop.
- \* Windows that are open when you exit.
- \* The size and position of the taskbar.

**Note I: This requires a re-logout to take effect. This means that if save settings on exit is turned on (default) and you turn it off, you have to do a re-logout, at which time it will still save the settings. The next time you exit it will not save the changes.**

**Note II: On Windows 98, the icon positions on the desktop will not be “fixed”. We believe this to be a bug in Windows 98.**

## Start menu tab



The Start menu tab lets you remove certain items from the start menu, such as: [Favorites](#), [Documents](#), [Find](#), [Run](#), [Log Off <username>](#), [Shut Down](#), [Taskbar & Start Menu \(on the Settings menu\)](#), [All folders on the Settings menu](#).

It also lets you remove the [Click here to begin animation](#), and also gives you the ability to change the [Menu speed](#).

## Favorites (IE 4.0+)



*(registered version only)*

### Operating Systems:

Windows 95: Original or higher + Internet Explorer 4 (including Desktop Update)

Windows 98: Yes

Windows NT: 4.0 Service Pack 3 or higher

Removing the check mark from this item will remove the Favorites folder from the Start menu.

**This only works with Internet Explorer 4.x or higher (including the Desktop Update) installed on the system.**

**When IE 5.x is installed on the system, it will also remove the Favorites from the IE5.x menu bar (the favorites button will still be on the toolbar).**

**Note I: This requires a re-logon to take effect.**

**Note II: this item will be greyed out in the shareware version.**

## Documents (IE 4.0+)



*(registered version only)*

### Operating Systems:

Windows 95: Original or higher + Internet Explorer 4 (including Desktop Update)

Windows 98: Yes

Windows NT: 4.0 Service Pack 3 or higher

Removing the check mark from this item will remove the Documents folder from the Start menu.

**This only works with Internet Explorer 4.x or higher (including the Desktop Update) installed on the system.**

In Windows 98, if you want to remove the **My Documents** folder from the Desktop, right-click the **My Documents** folder, and from the context menu select **Remove from Desktop**. If you want to put this folder back on the Desktop, just right-click an empty space on the Desktop, and from the context menu select **New > My Documents Folder on Desktop**.

**Note I: This requires a re-logon to take effect.**

**Note II: this item will be greyed out in the shareware version.**

## Find



### Operating Systems:

Windows 95: Yes

Windows 98: Yes

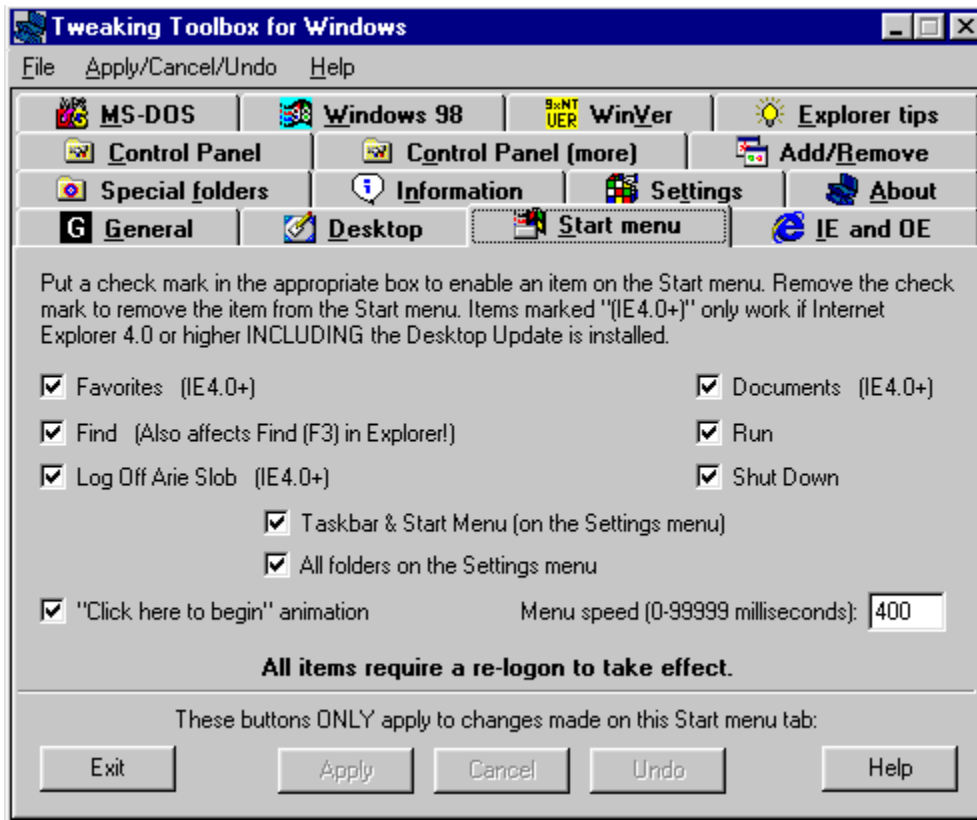
Windows NT: 4.0 Service Pack 3 or higher

Removing the check mark from this item will remove the Find folder from the Start menu.

Removing the Find folder from the Start menu will also effect the **Find** function in **Windows Explorer**. Pressing **F3** normally brings up the **Find** window in Windows Explorer, but if you remove the Find folder from the Start menu, pressing **F3** in Windows Explorer will be disabled.

**Note: This requires a re-logout to take effect.**

## Run



### Operating Systems:

Windows 95: Yes

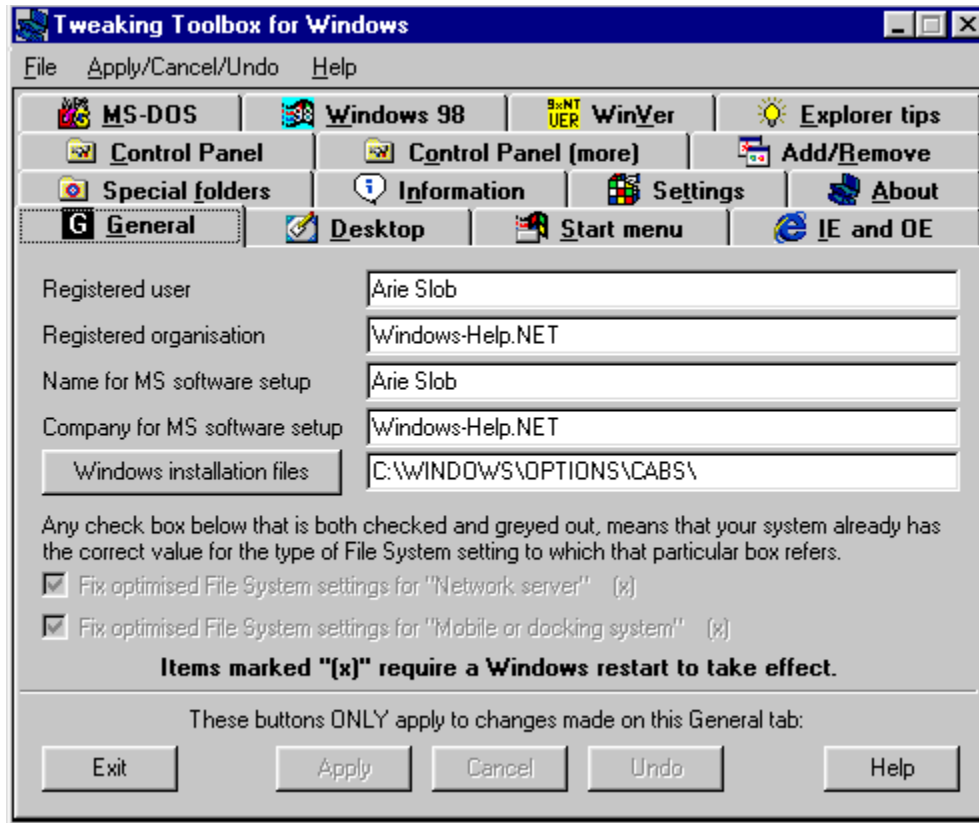
Windows 98: Yes

Windows NT: 4.0 Service Pack 3 or higher

Removing the check mark from this item will remove the Run command from the Start menu.

**Note: This requires a re-logout to take effect.**

## Log Off <username> (IE 4.0+)



*(registered version only)*

### Operating Systems:

Windows 95: Original or higher + Internet Explorer 4 (including Desktop Update)

Windows 98: Yes

Windows NT: 4.0 Service Pack 3 or higher

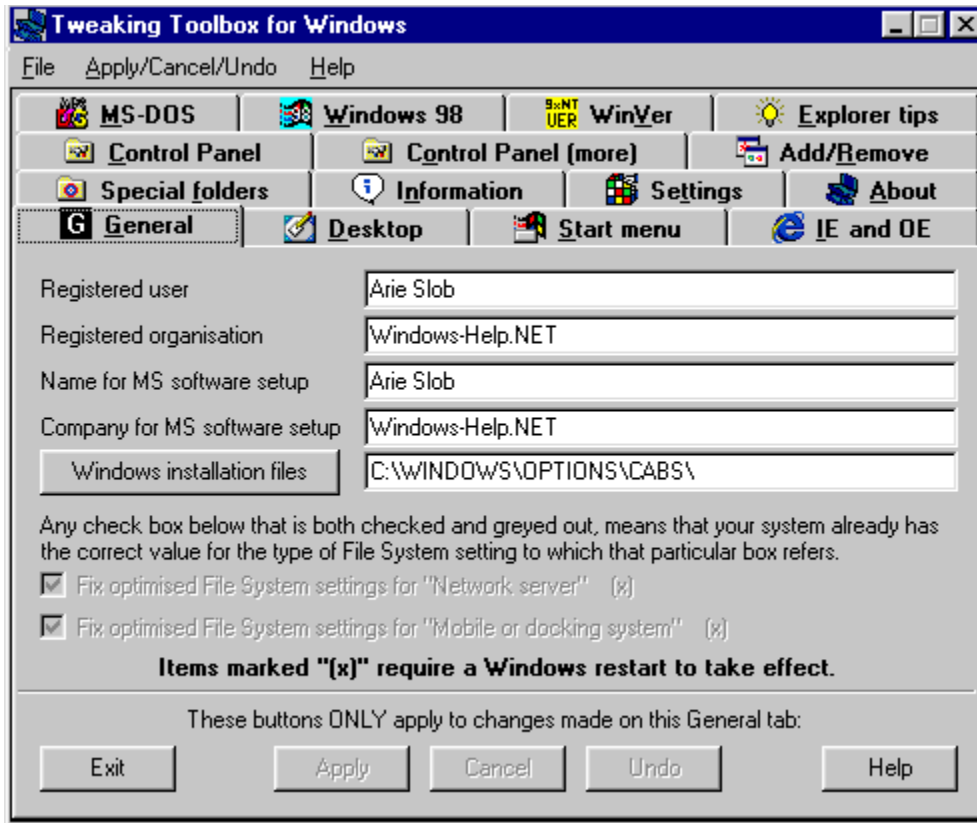
Removing the check mark from this item will remove the Log Off <username> command from the Start menu.

**This only works with Internet Explorer 4.x or higher (including the Desktop Update) installed on the system.**

**Note: This requires a re-logout to take effect.**



## Shut Down



### Operating Systems:

Windows 95: Yes

Windows 98: Yes

Windows NT: 4.0 Service Pack 3 or higher

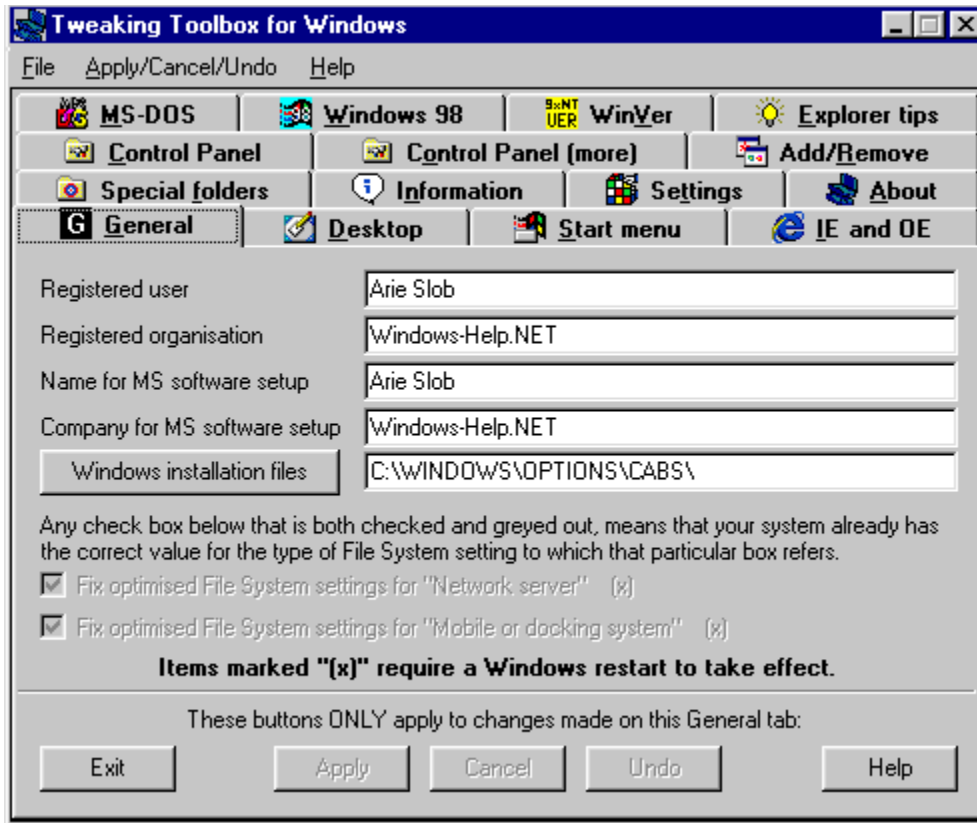
Removing the check mark from this item will remove the Shut Down command from the Start menu, and disable the Windows shutdown.

Shut Down will be re-enabled by putting the check-mark back in the Shut Down item.

**Note I: When you have disabled the Windows Shut Down, there is no way to shut down Windows, other than to do a double [Ctrl] + [Alt] + [Del], a reset, or to switch off the computer's power. These methods are not recommended ways of shutting down Windows.**

**Note I: This requires a re-logout to take effect.**

## Taskbar & Start Menu (on the Settings menu)



*(registered version only)*

### Operating Systems:

Windows 95: Yes

Windows 98: Yes

Windows NT: 4.0 Service Pack 3 or higher

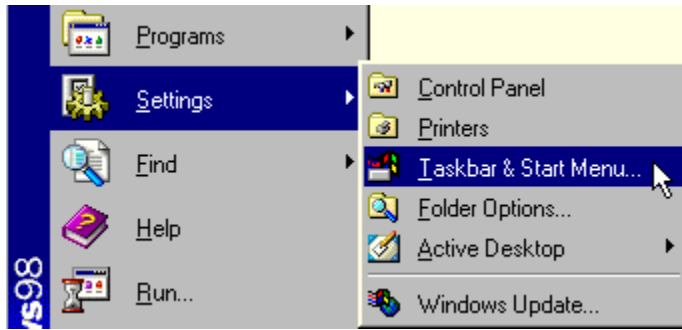
Removing the check mark from this item will remove the **Taskbar & Start Menu** entry from the Settings menu

**Note I: This requires a re-logout to take effect.**

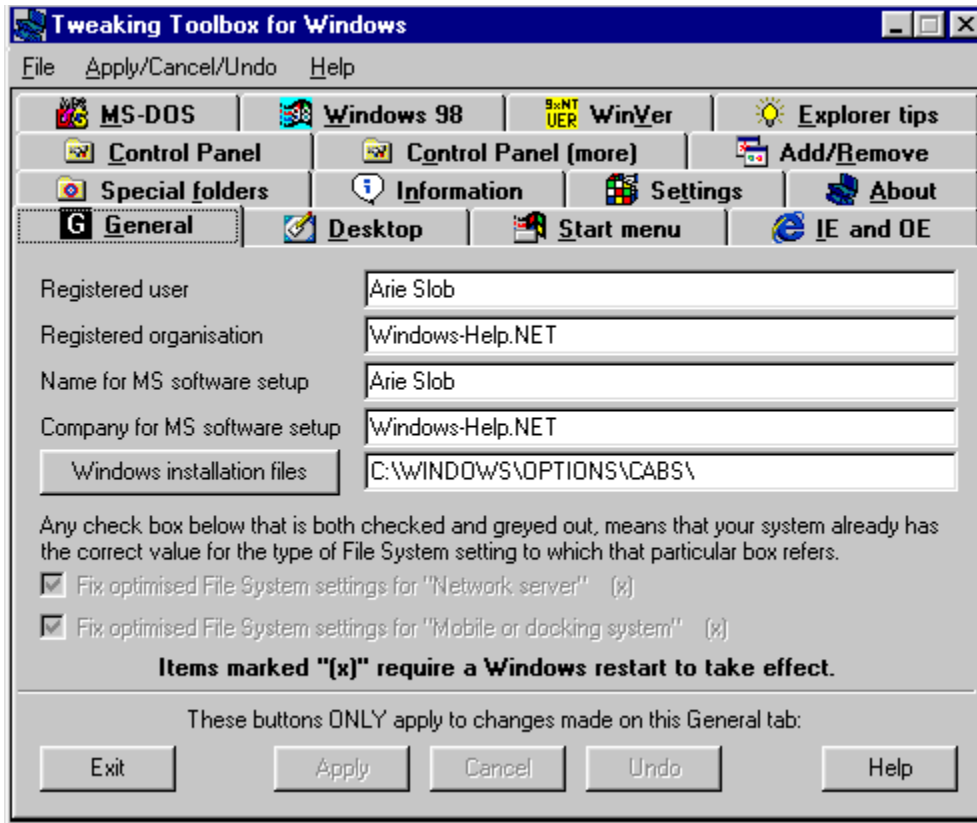
**Note II: On Windows 95 this is called "Taskbar"**

**Note III: Removing both Taskbar & "All folders" on Windows 95, will completely remove the Settings menu from the Start Menu**

**Note IV: this item will be greyed out in the shareware version.**



## All folders on the Settings menu



*(registered version only)*

### Operating Systems:

Windows 95: Yes

Windows 98: Yes

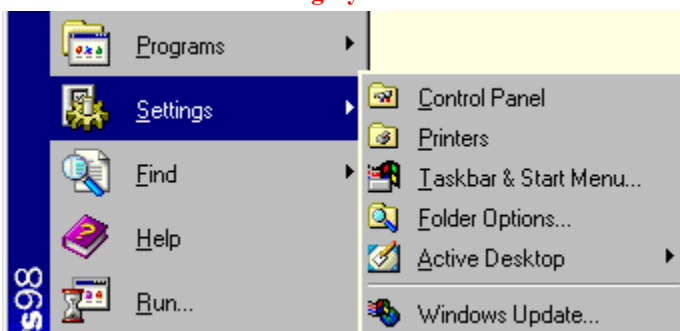
Windows NT: 4.0 Service Pack 3 or higher

Removing the check mark from this item will remove the **Control Panel & Printers** entry from the Settings menu

**Note I: This requires a re-logout to take effect.**

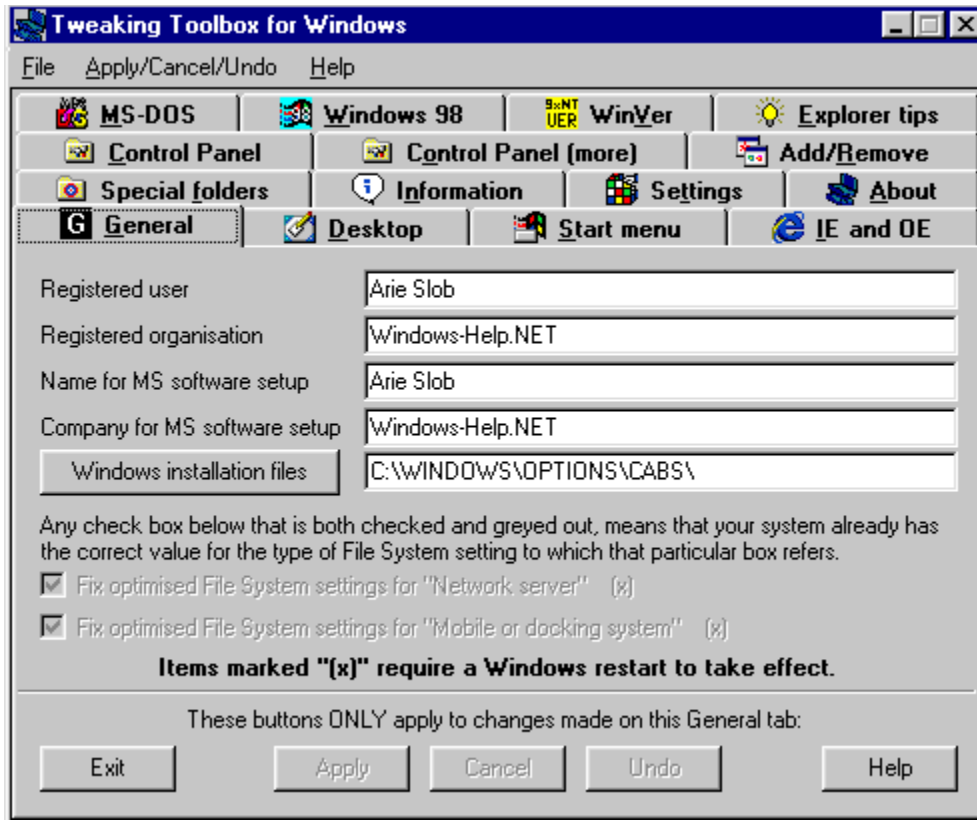
**Note II: Removing both Taskbar & "All folders" on Windows 95, will completely remove the Settings menu from the Start Menu**

**Note III: this item will be greyed out in the shareware version.**





## “Click here to begin” animation



### Operating Systems:

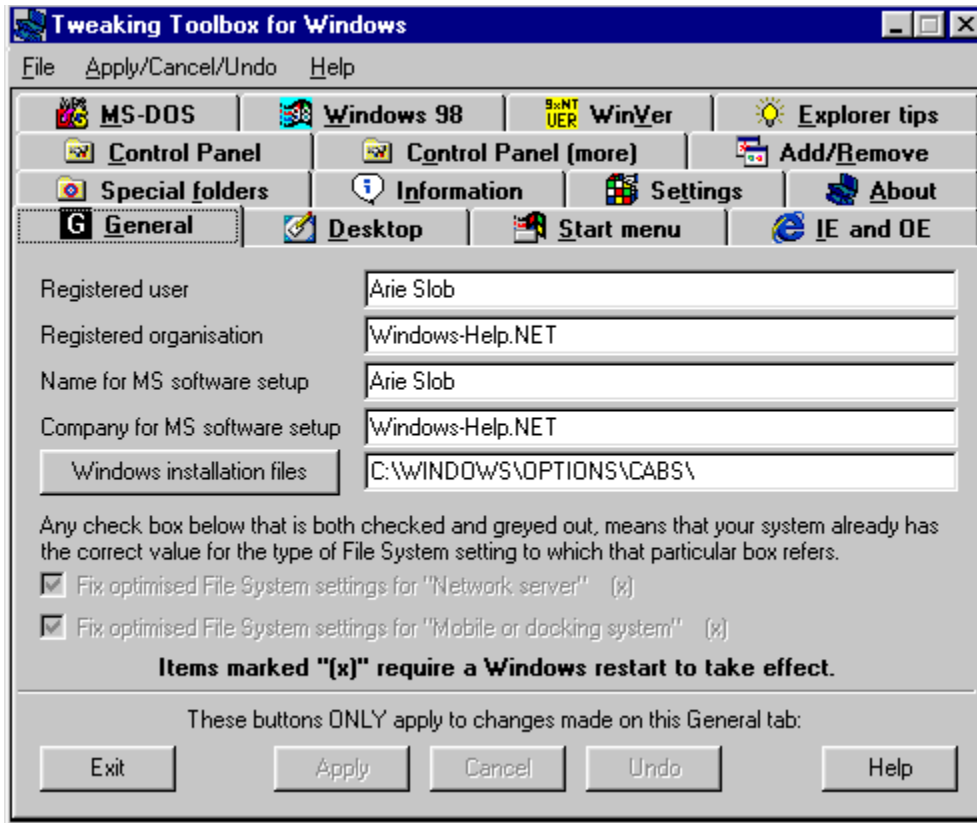
Windows 95: Yes

Windows 98: Yes

Windows NT: 4.0 Service Pack 3 or higher

Removing the check mark from this item will remove the animated “Click here to begin” message from the taskbar. This animation is displayed by Windows 95 when there is enough room on the taskbar.

## Menu speed



### Operating Systems:

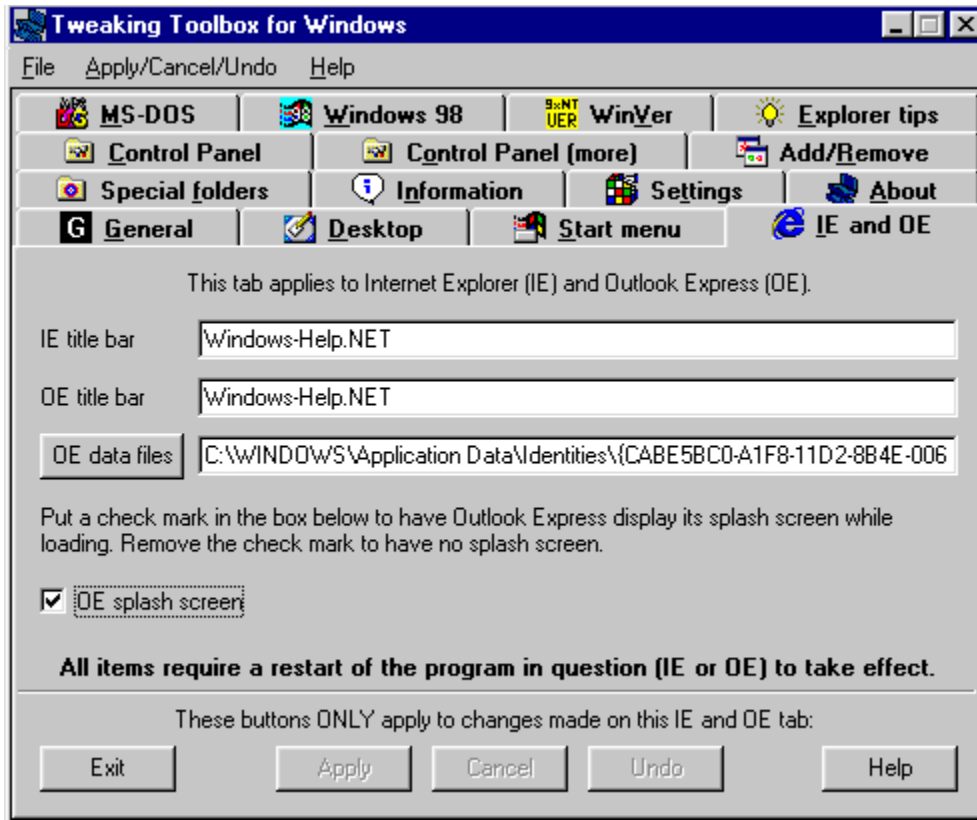
Windows 95: Yes

Windows 98: Yes

Windows NT: 4.0 Service Pack 3 or higher

This setting controls the speed at which (cascading) menus automatically open when you move the mouse over them. The fastest setting (0) causes them to open immediately. The default value is 400, and the slowest setting we choose to use is 99999. These are all in milliseconds.

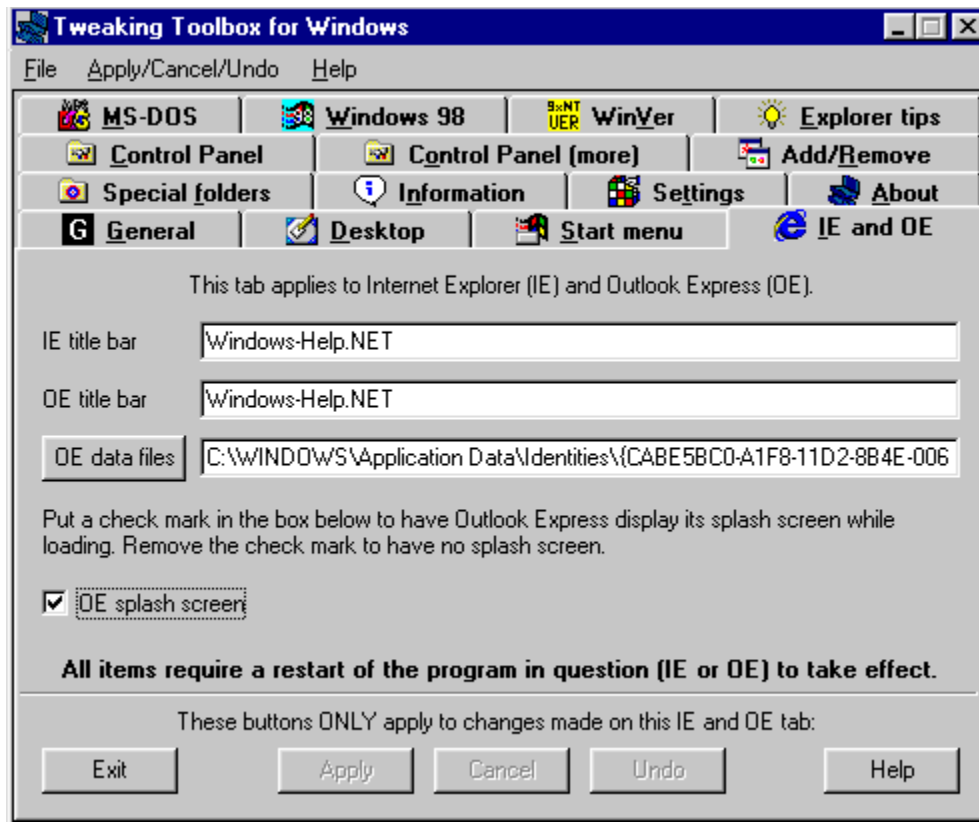
## IE and OE tab



This tab lets you change the [IE title bar](#) & [OE title bar](#) text, the location of the [OE data files](#) and you can turn off the [OE splash screen](#).



## IE title bar



### Operating Systems:

Windows 95: Original or higher + Internet Explorer 3.x or higher

Windows 98: Yes

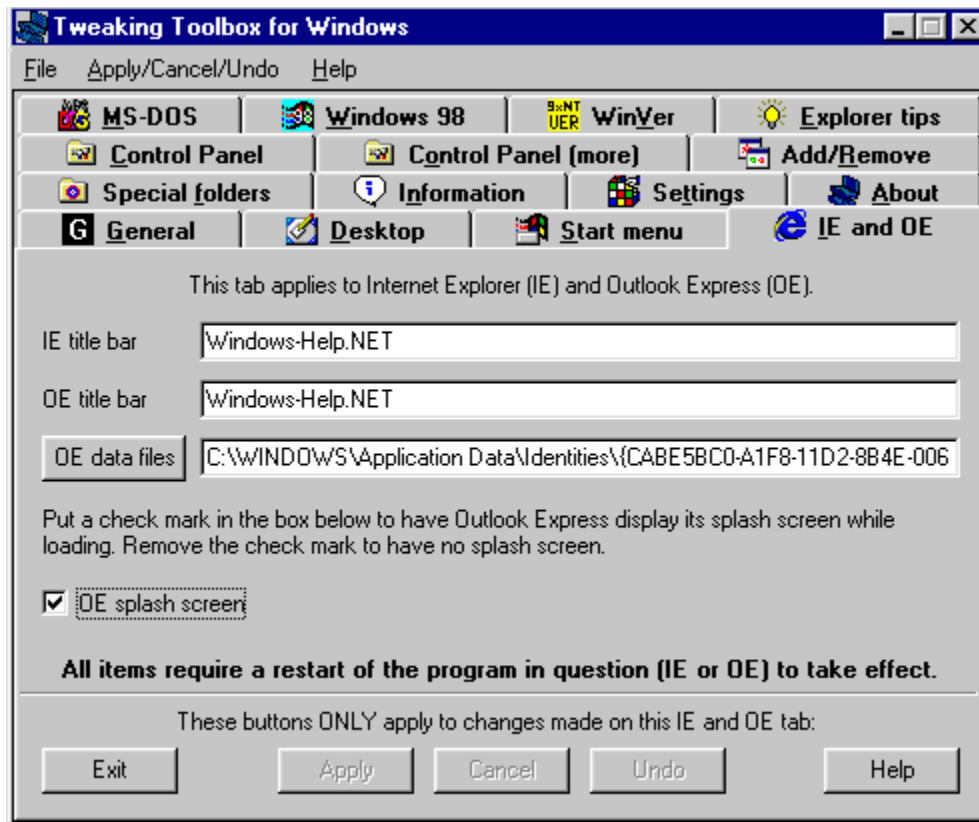
Windows NT: 4.0 Service Pack 3 or higher

Type the text you want to use as your custom title in the Internet Explorer title bar.



**Note: This requires a restart of Internet Explorer.**

## OE title bar



### Operating Systems:

Windows 95: Original or higher + Internet Explorer 3.x or higher

Windows 98: Yes

Windows NT: 4.0 Service Pack 3 or higher

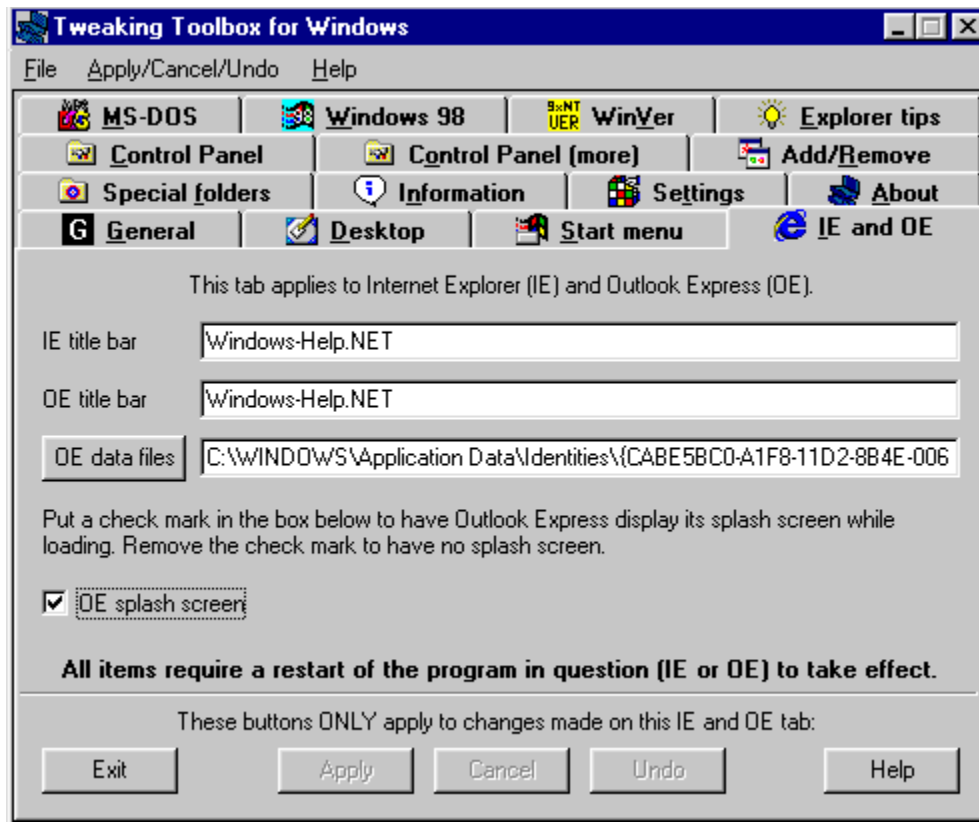
Type the text you want to use as your custom title in the Outlook Express title bar.

**Note I: This requires a restart of Outlook Express.**

**Note II: When Outlook Express is not installed on your system, this item will be greyed out.**

**Note III: On Windows NT, this function will not work on a machine that has OE 4.0 installed in case a roaming profile is used and another machine that has been accessed has OE 5.0 installed.**

## OE data files



*(registered version only)*

### Operating Systems:

Windows 95: Original or higher + Internet Explorer 3.x or higher

Windows 98: Yes

Windows NT: 4.0 Service Pack 3 or higher

To change the location where Outlook Express stores your files, just press the **OE data files** button, you will be presented with a **Browse for Folder** window, which you can use to select the folder where you copied your Outlook Express files.

You have to copy the Outlook Express files to the new location **before** opening Outlook Express. If you open Outlook Express without copying your data files to the new location, Outlook Express will create new (default) folders, like when you start Outlook Express for the first time.

To change the location of your data files used by Outlook Express, first move the files to the new location. Your old files can be found at **\Windows\Application Data\Microsoft\Outlook Express** (which is the suggested default location when installing OE). If your files are not at this location, you can do a search (press **F3**) in **Windows Explorer** and search for **\*.mbx** which will show you the location of the OE (mail) message box files.

**We strongly suggest that you copy the files first, and once you are satisfied that OE is working correctly and that it is actually storing your files in the new location, you can delete the old files.**

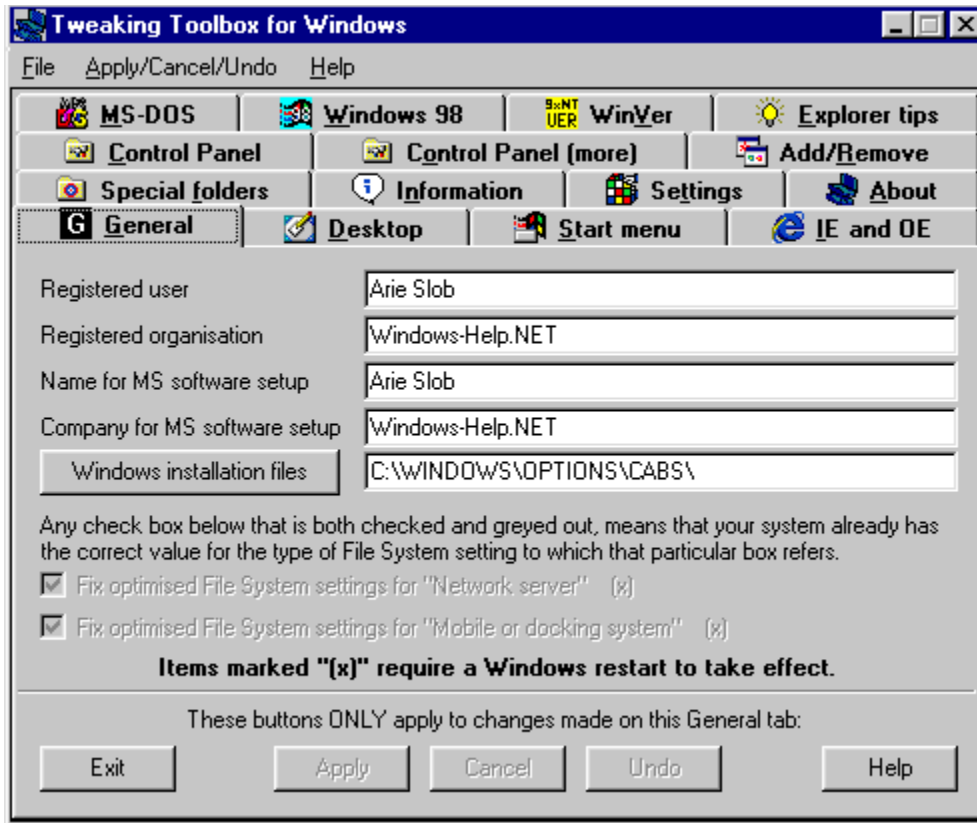
**Note I: When Outlook Express is not installed on your system, or you have never run it, this item will be greyed out.**

**Note II: this item will be greyed out in the shareware version.**

**Note III: OE 5 uses a new format for it's message store, the extension it uses is \*.dbx.**

**Note IV: On Windows NT, this function will not work on a machine that has OE 4.0 installed in case a roaming profile is used and another machine that has been accessed has OE 5.0 installed.**

## OE splash screen



### Operating Systems:

Windows 95: Original or higher + Internet Explorer 3.x or higher

Windows 98: Yes

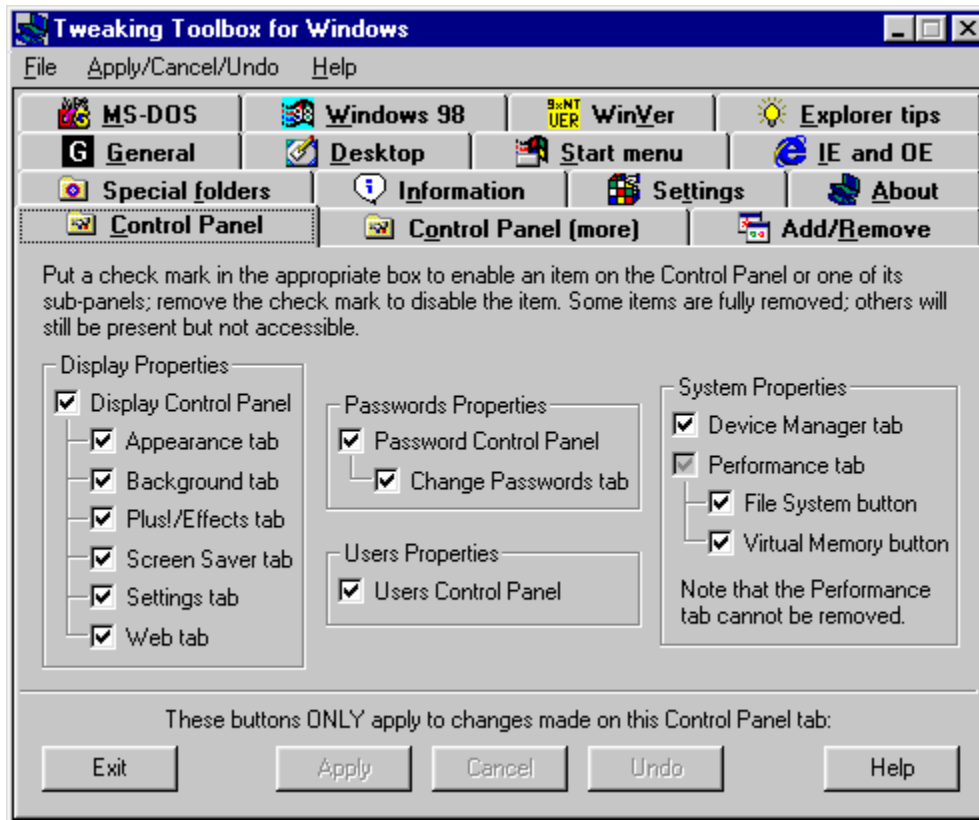
Windows NT: 4.0 Service Pack 3 or higher

Removing the check mark from this item will disable the Outlook Express splash screen.

**Note I: When Outlook Express is not installed on your system, this item will be greyed out.**

**Note II: On Windows NT, this function will not work on a machine that has OE 4.0 installed in case a roaming profile is used and another machine that has been accessed has OE 5.0 installed.**

## Control Panel tab



Lets you disable/enable items in Control Panel:

### Display Properties:

- [Display Control Panel](#)
- [Appearance tab](#)
- [Background tab](#)
- [Plus!/Effects tab](#)
- [Screen Saver tab](#)
- [Settings tab](#)
- [Web tab](#)

### Passwords Properties:

- [Password Control Panel](#)
- [Change Passwords tab](#)

### System Properties:

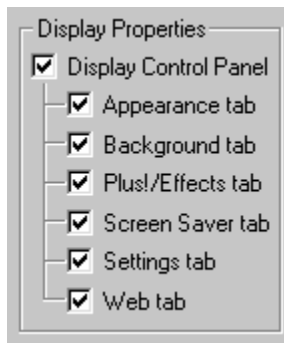
- [Device Manager tab](#)
- [File System button](#)
- [Virtual Memory button](#)

### User Properties:

- [Users Control Panel](#)



## Display Control Panel



### Operating Systems:

Windows 95: Yes

Windows 98: Yes

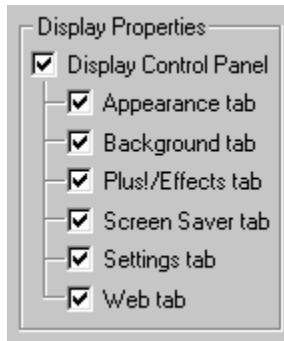
Windows NT: 4.0 Service Pack 3 or higher

Removing the check mark from this item will disable the **Display Properties**, both when right-clicking the Desktop and selecting **Properties**, and when selecting **Control Panel - Display**.

**Note: This will not remove the Display icon in Control Panel, but when you try to access it, you will get a warning - as you also get when right-clicking the Desktop and choosing Properties from the context menu - that this function has been disabled by the systems administrator.**



## Appearance tab



### Operating Systems:

Windows 95: Yes

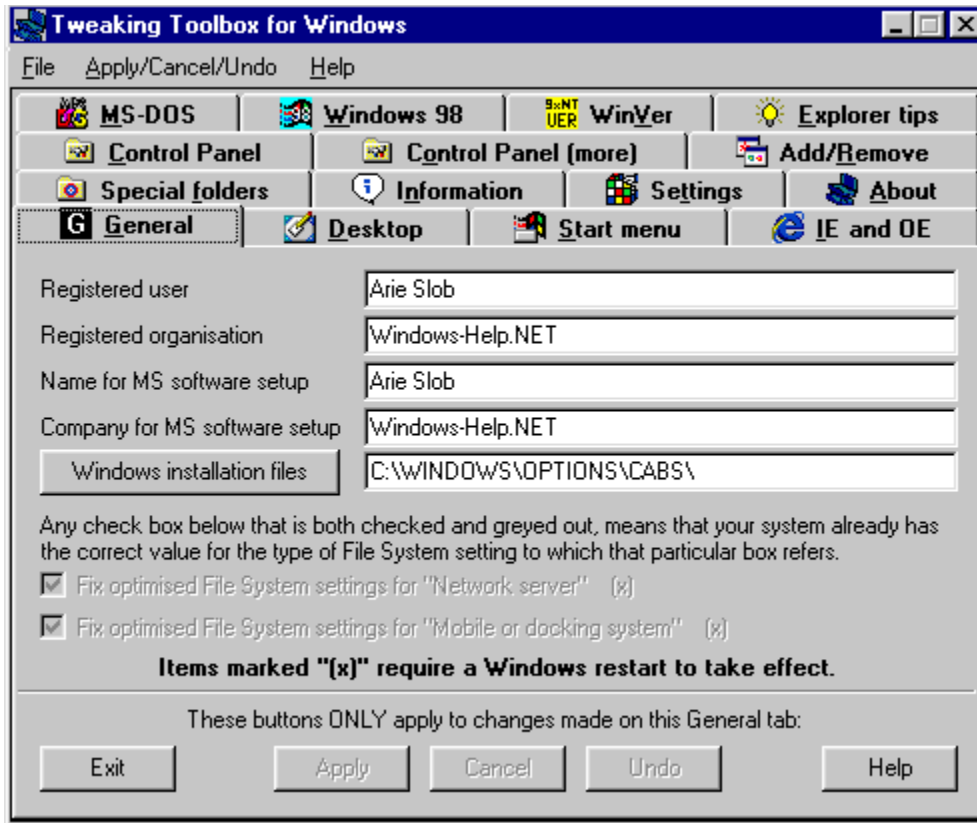
Windows 98: Yes

Windows NT: 4.0 Service Pack 3 or higher

Removing the check mark from this item will hide the **Appearance** tab in **Display Properties**, both when right-clicking the Desktop and selecting **Properties**, and when selecting **Control Panel - Display**.

On the Appearance tab you can change a host of settings to change the appearance of Windows, such as color schemes, font sizes & types used in menu's etc.

## Background tab



### Operating Systems:

Windows 95: Yes

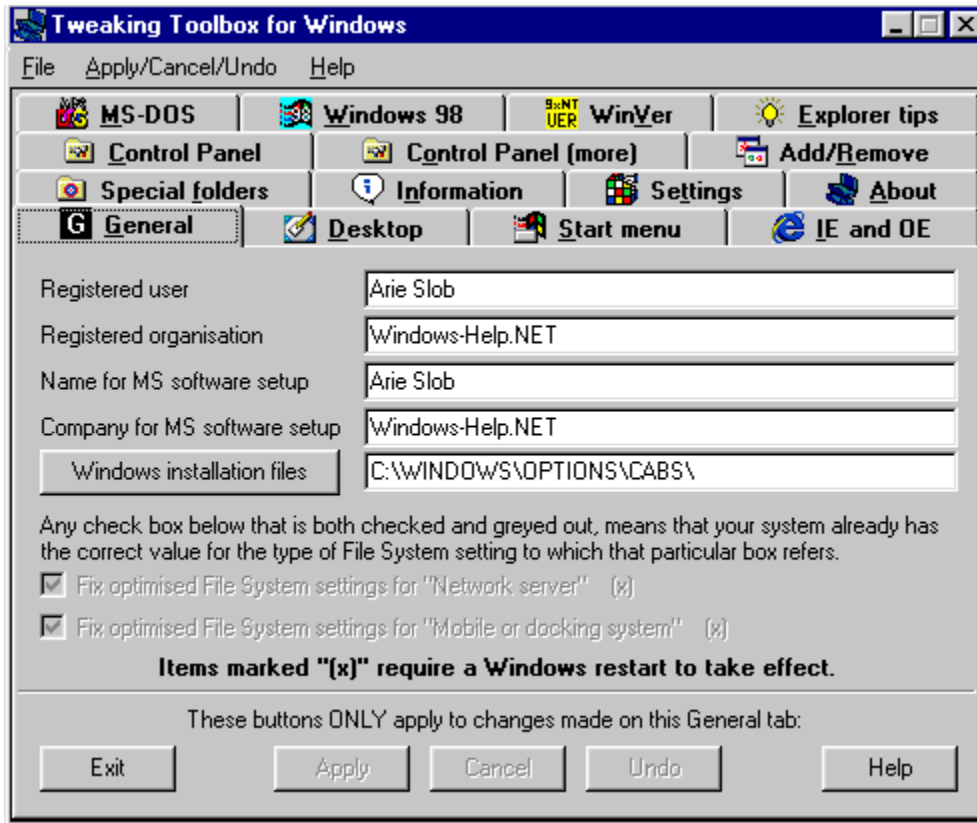
Windows 98: Yes

Windows NT: 4.0 Service Pack 3 or higher

Removing the check mark from this item will hide the **Background** tab in **Display Properties**, both when right-clicking the Desktop and selecting **Properties**, and when selecting **Control Panel - Display**.

The **Background** tab is used to change the background (“Wall paper”) of the Desktop.

## Plus!/Effects tab



### Operating Systems:

Windows 95: Original or higher + Microsoft Plus!

Windows 98: Yes

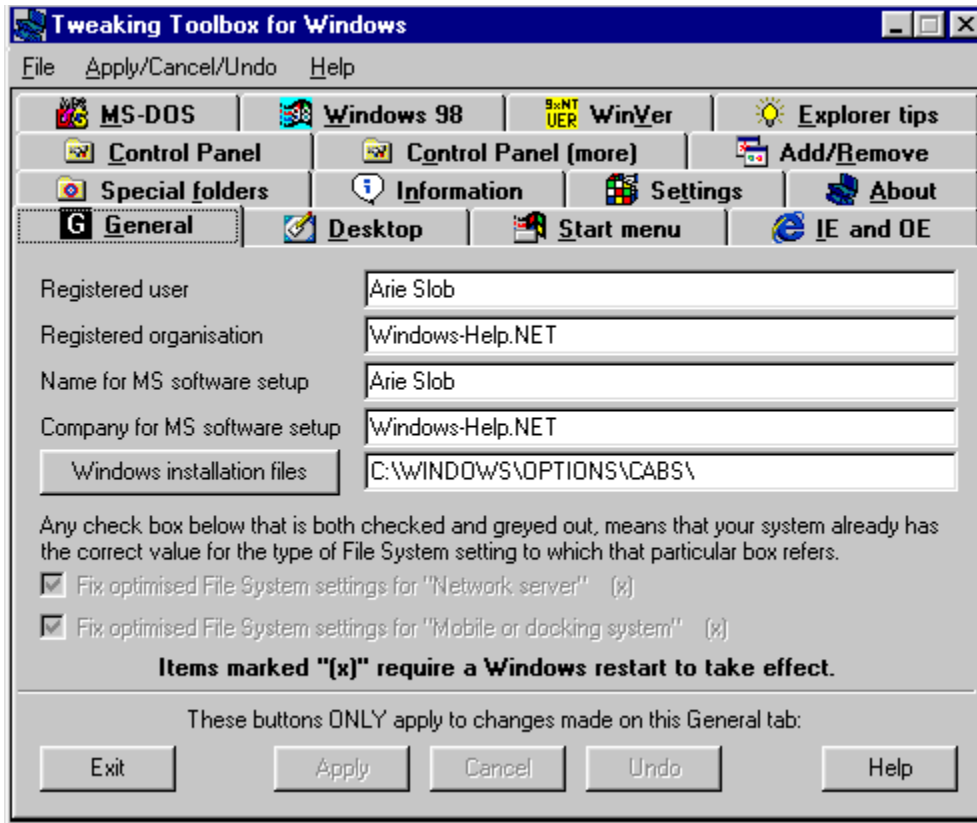
Windows NT: 4.0 Service Pack 3 or higher

Removing the check mark from this item will hide the **Plus!/Effects** tab in **Display Properties**, both when right-clicking the Desktop and selecting **Properties**, and when selecting **Control Panel - Display**.

On Windows 98 this tab is called **Effects**, whereas on Windows 95 it is called **Plus!** On Windows 95 it only exists if the **Plus!** pack has been installed.

This tab let you customise some of the Desktop Icons, and some other visual effects.

## Screen Saver tab



### Operating Systems:

Windows 95: Yes

Windows 98: Yes

Windows NT: 4.0 Service Pack 3 or higher

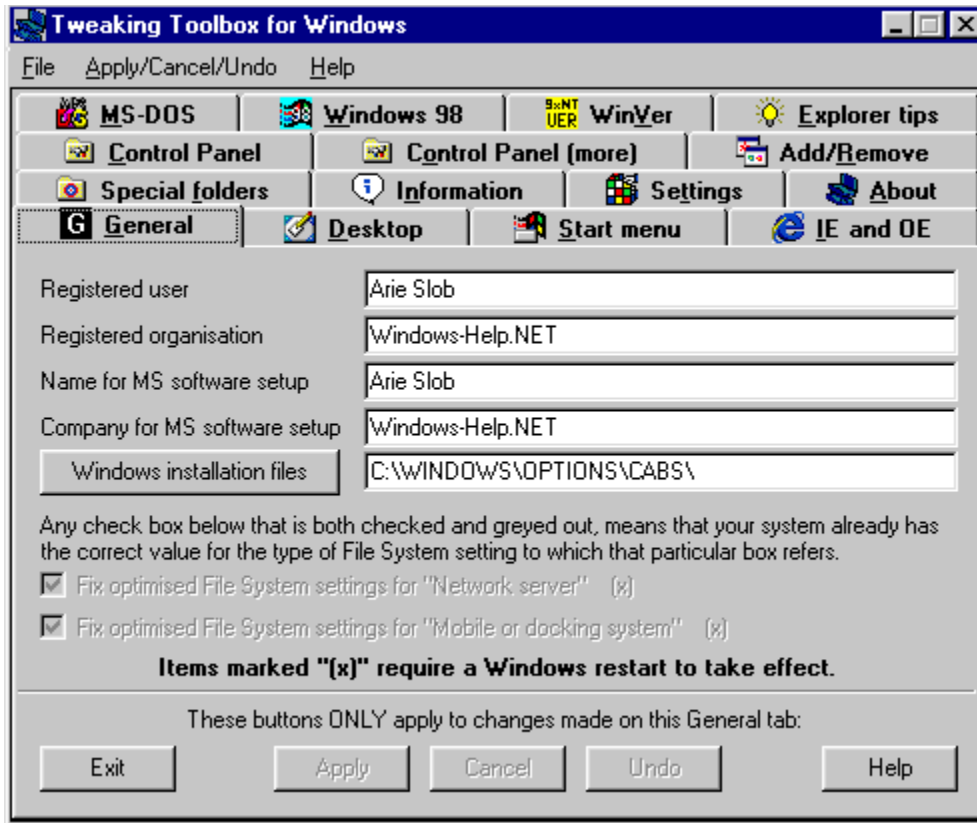
Removing the check mark from this item will hide the **Screen Saver** tab in **Display Properties**, both when right-clicking the Desktop and selecting **Properties**, and when selecting **Control Panel - Display**.

The **Screen Saver** tab is used to enable/change screen savers.

In Windows 95 you can also change the **Energy saving features** of the monitor on this tab.

In Windows 98 you can - besides the change in **Energy saving features** of the monitor - also change **Power Management** settings for the computer.

## Settings tab



### Operating Systems:

Windows 95: Yes

Windows 98: Yes

Windows NT: 4.0 Service Pack 3 or higher

Removing the check mark from this item will hide the **Settings** tab in **Display Properties**, both when right-clicking the Desktop and selecting **Properties**, and when selecting **Control Panel - Display**.

The **Settings** tab is used:

In **Windows 95** to:

Change the screen resolution and colour depth, change the (screen) font size, and to change the Graphics adapter driver and Monitor type.

In **Windows 98** to:

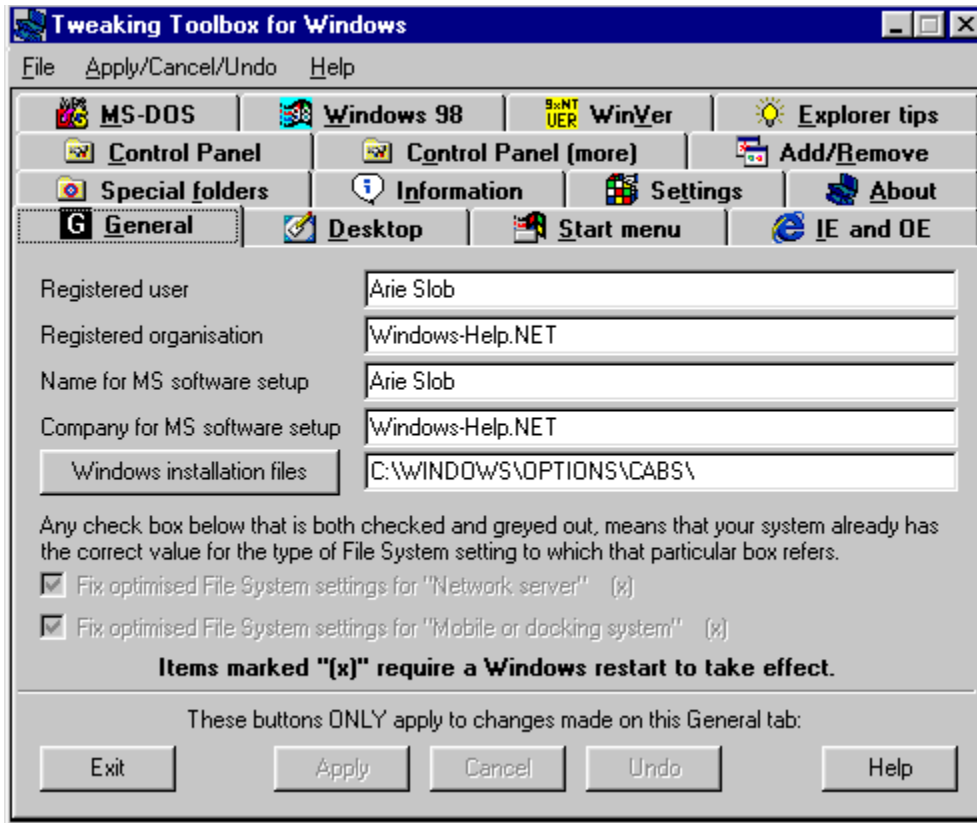
In addition to the functions above, change the refresh rate of the Graphics adapter, change the hardware acceleration of the Graphics adapter\*, change the colour profile used by your monitor.

\*) The hardware acceleration of the Graphics adapter can also be changed from **Control Panel - System - Performance**.

When Microsoft **Plus!** is installed on Windows 95, disabling the **Settings** tab will also remove the **Plus!** tab when you have a web browser **prior** to Internet Explorer 4.0

When Windows 98 is installed, disabling the **Settings** tab will also disable the **Effects** tab and **Web** tab.

## Web tab



### Operating Systems:

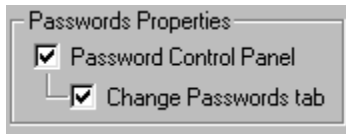
Windows 95: Original or higher + Internet Explorer 4 (including Desktop Update)

Windows 98: Yes

Windows NT: 4.0 Service Pack 3 or higher

Removing the check mark from this item will hide the **Web** tab in **Display Properties**, both when right-clicking the Desktop and selecting **Properties**, and when selecting **Control Panel - Display**.

## Password Control Panel



*(registered version only)*

### Operating Systems:

Windows 95: Yes

Windows 98: Yes

Windows NT: 4.0 Service Pack 3 or higher

Removing the check mark from this item will disable the **Password Properties** from **Control Panel**, so users will not be able to add/change passwords or User Profiles.

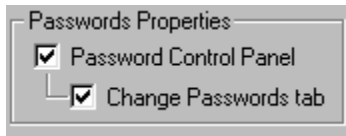
**Note I: when IE 4.x or higher is installed on Windows 95, or when using Windows 98, you would also have to disable the Users Control Panel, because users can still add new users with new passwords to the system via the Users applet.**

**Note II: This will not remove the Password icon in Control Panel, but when you try to access it, you will get a warning that this function has been disabled by the systems administrator.**

**Note III: this item will be greyed out in the shareware version.**



## Change Passwords tab



*(registered version only)*

### **Operating Systems:**

Windows 95: Yes

Windows 98: Yes

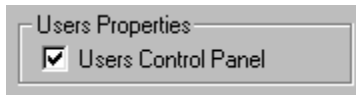
Windows NT: 4.0 Service Pack 3 or higher

Removing the check mark from this item will hide the **Change Passwords** tab from **Password Properties** in **Control Panel**, thus users will not be able to change passwords.

**Users can still add new users with new passwords. If you want to disable this functionality, you have to disable the Password Control Panel.**

**Note: this item will be greyed out in the shareware version.**

## Users Control Panel



### Operating Systems:

Windows 95: Yes

Windows 98: Yes

Windows NT: No

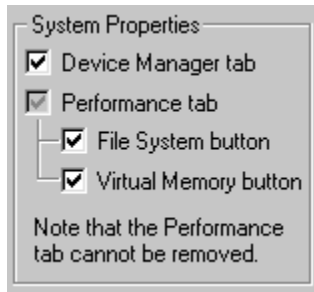
Removing the check mark from this item will disable the **Users applet** from **Control Panel**, so users will not be able to add multiple users to the system.

The **Users** applet is only available on Windows 95 with **Internet Explorer 4.x** or **higher** installed on the system, and on Windows 98.

On Windows 95 **without** Internet Explorer 4.x or higher present on the system, disabling the **Users Control Panel** will remove the **User Profiles** tab from the **Password Applet** in Control Panel.

**Note: This will not remove the Users icon in Control Panel, but when you try to access it, you will get a warning that this function has been disabled by the systems administrator.**

## Device Manager tab



### Operating Systems:

Windows 95: Yes

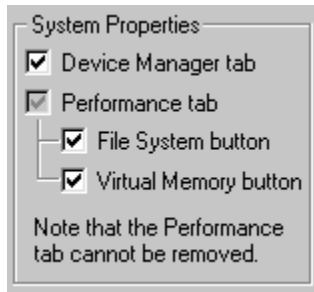
Windows 98: Yes

Windows NT: No

Removing the check mark from this item will hide the **Device Manager** tab from the **System Properties (Control Panel - System)**.

This will hide all device information from users.

## File System button



### Operating Systems:

Windows 95: Yes

Windows 98: Yes

Windows NT: No

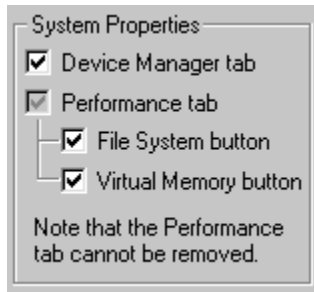
Removing the check mark from this item will hide the **File System** button on the **Performance** tab from the **System Properties (Control Panel - System)**.

This will prevent users from:

1. Change the Typical role of the computer
2. Change read ahead optimisation
3. Check or uncheck the **Search for new floppy disk drives each time your computer starts**
4. Change the supplemental cache for the CD-ROM drive
5. Enable or disable write-behind caching on all removable disk drives
6. Change Troubleshooting properties

**Note that #3 and #5 only apply to Windows 98.**

## Virtual Memory button



### Operating Systems:

Windows 95: Yes

Windows 98: Yes

Windows NT: No

Removing the check mark from this item will hide the **Virtual Memory** button on the **Performance** tab from the **System Properties (Control Panel - System)**.

This prevent users from changing the Virtual memory settings.

## Control Panel (more)



### Operating Systems:

Windows 95: Yes

Windows 98: Yes

Windows NT: 4.0 Service Pack 3 or higher

On this tab you can show/hide Control Panel applets.

Some applets contain more than 1 item. For example the **main.cpl** applet contains Fonts, Keyboard, Mouse, PC Card (PCMCIA) and Printers. TTW lists these applets in alphabetical order, and points a red arrow to the first item.

**Note I: On Windows 95 the icon for the Printers applet (a "sub" applet from main.cpl) shows a mouse. We believe this to be a Windows 95 bug.**

**Note II: In Windows 95/98 changes you make here are global, in Windows NT they are user specific.**

## Add/Remove



### Operating Systems:

Windows 95: Yes

Windows 98: Yes

Windows NT: 4.0 Service Pack 3 or higher

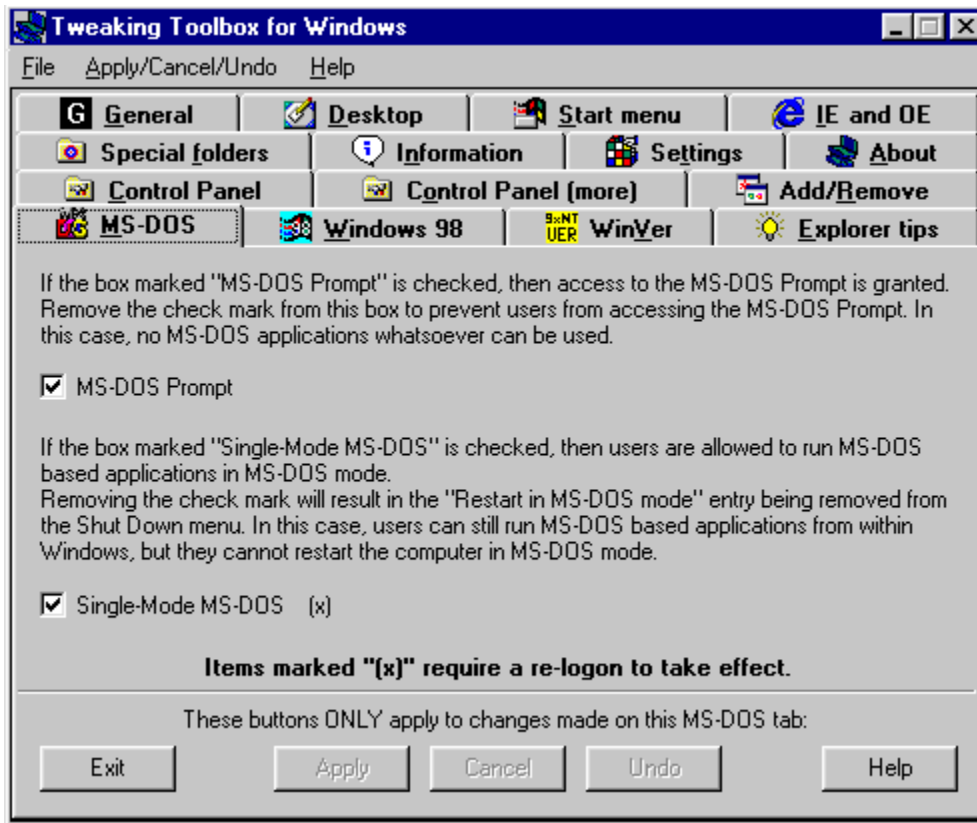
Here you can **Remove**, **Edit** or **Add** entries to/from the **Add/Remove Programs** entry in **Control Panel**.

This comes in handy when you manually removed an application from your system, without using the uninstall function. Removing an application manually leaves the entry in Add/Remove Programs.

The entries on Add/Remove within <> are entries that do not have a description. Usually, these are entries used by Microsoft products and they should not be modified or deleted, because they contain hidden information

**Note: Removing an entry here will NOT uninstall the software from your system, it will just remove the entry from the list of programs presented by the Add/Remove Programs entry.**

## MS-DOS Prompt



*(registered version only)*

### Operating Systems:

Windows 95: Yes

Windows 98: Yes

Windows NT: No

Removing the check mark from the **MS-DOS Prompt** check box will prevent users from accessing the MS-DOS Prompt, as well as preventing the user to run MS-DOS based programs.

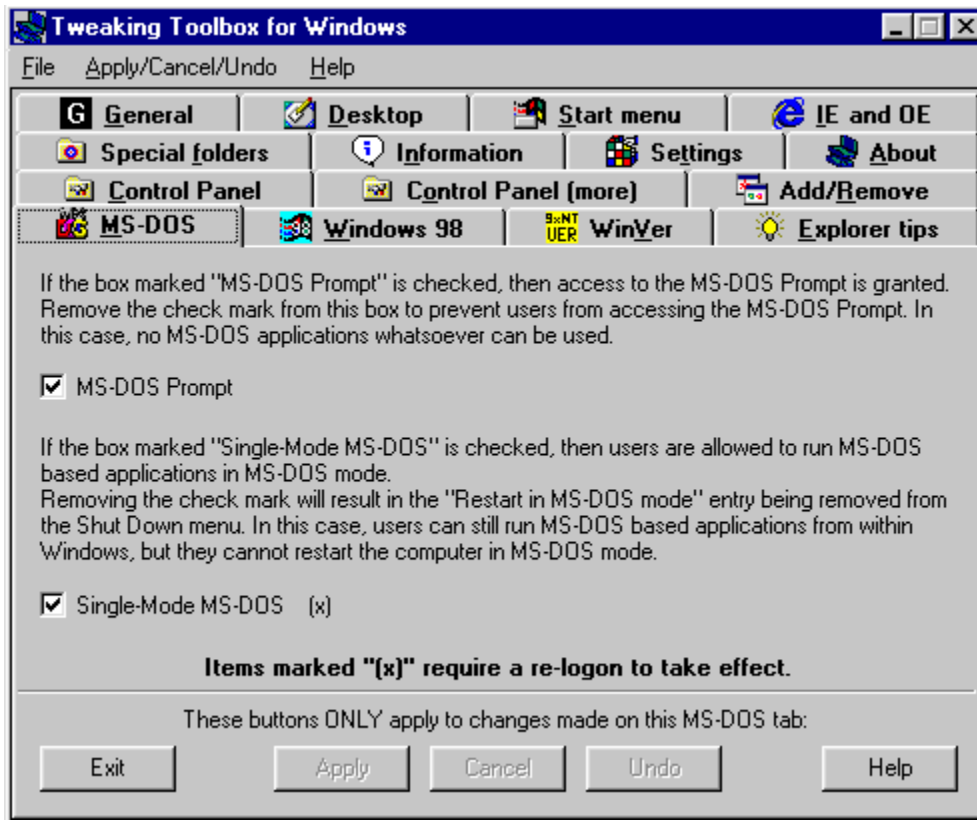
**It also disables the Start - Shut Down - Restart in MS-DOS mode - you will get a warning that this function has been disabled by the systems administrator.**

**Note I: this item will be greyed out in the shareware version.**

**Note II: This requires a re-login to take effect.**



## Single-Mode MS-DOS



*(registered version only)*

### Operating Systems:

Windows 95: Yes

Windows 98: Yes

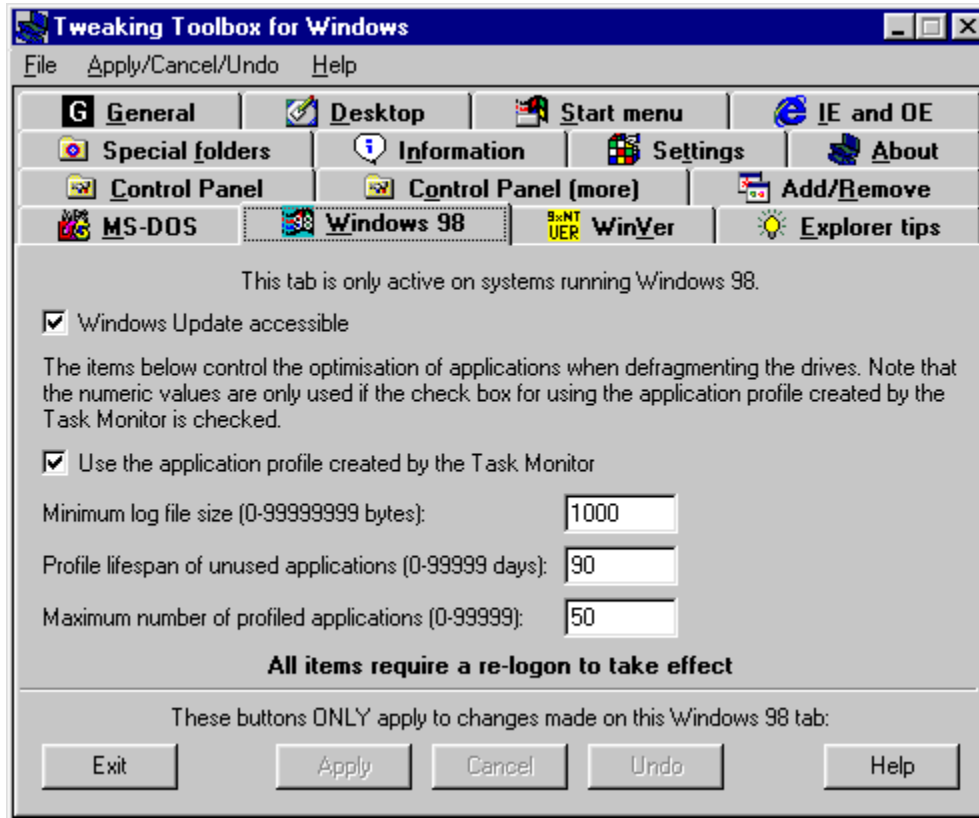
Windows NT: No

Removing the check mark from the **Single-Mode MS-DOS** check box will remove the **Restart in MS-DOS mode** on the Shut Down menu. When you re-enable Single-Mode MS-DOS, you will have to restart Windows to recover the use of the **Restart in MS-DOS mode** on the Shut Down menu.

**Note I: this item will be greyed out in the shareware version.**

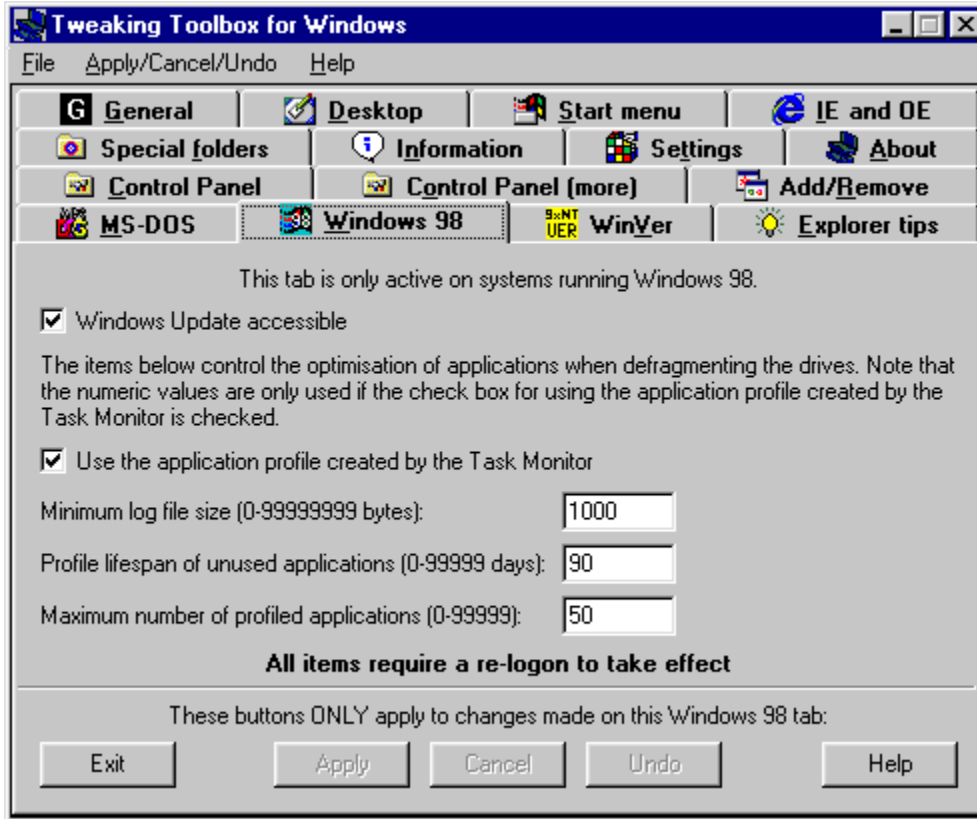
**Note II: This requires a re-login to take effect.**

## Windows 98 tab



The Windows 98 tab lets you disable the [Windows Update](#) from the Start menu, and lets you change [Task Monitor settings](#).

## Windows Update accessible



### Operating Systems:

Windows 95: No  
Windows 98: Yes  
Windows NT: No

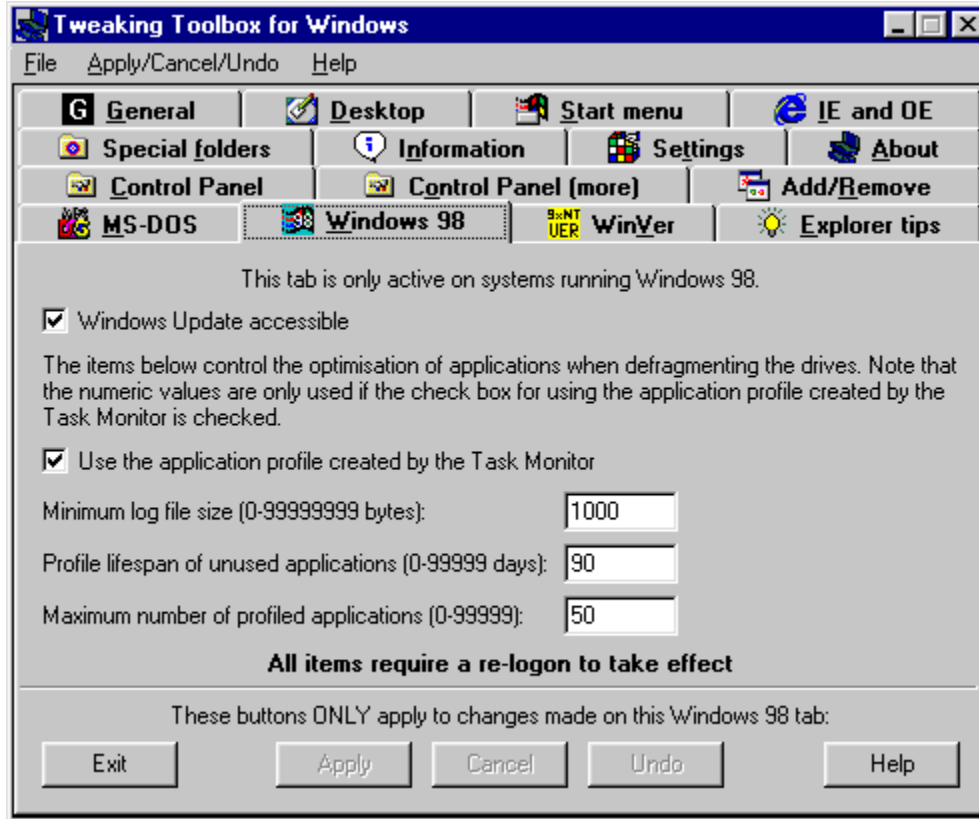
Removing the check mark from the **Windows Update accessible** check box, will disable the use of the Windows Update feature.

When PCs are centrally managed, it can be useful to switch the Windows Update feature off, so users will not be able to download any new drivers/patches using the Windows Update feature.

**Note I: This tab is only active on systems running Windows 98.**

**Note II: This requires a re-logout to take effect.**

## Task Monitor settings



*(registered version only)*

### Operating Systems:

Windows 95: No

Windows 98: Yes

Windows NT: No

These items control the optimisation of applications when defragmenting your hard drive.

With the **Use the application profile created by the Task Monitor** checkbox, you can choose to enable/disable the use of the application profile. When checked, the application profile is used when defragmenting the hard drive. When profile is not used, programs are optimised in FindFirst/FindNext order of the **Application.lgn** files in the \Windows\Aplog folder, and the parameters below are ignored.

With the **Minimum log file size** you can control the size (in bytes) of log files to qualify for optimisation. Programs with log files smaller than this value are not optimised. These log files are stored in the (hidden) folder \Windows\Aplog. If you use the value 0, this parameter is ignored.

With the **Profile lifespan of unused applications** you can control the maximum amount of days a program will qualify for optimisation while not being used. If you use the value 0, this parameter is ignored.

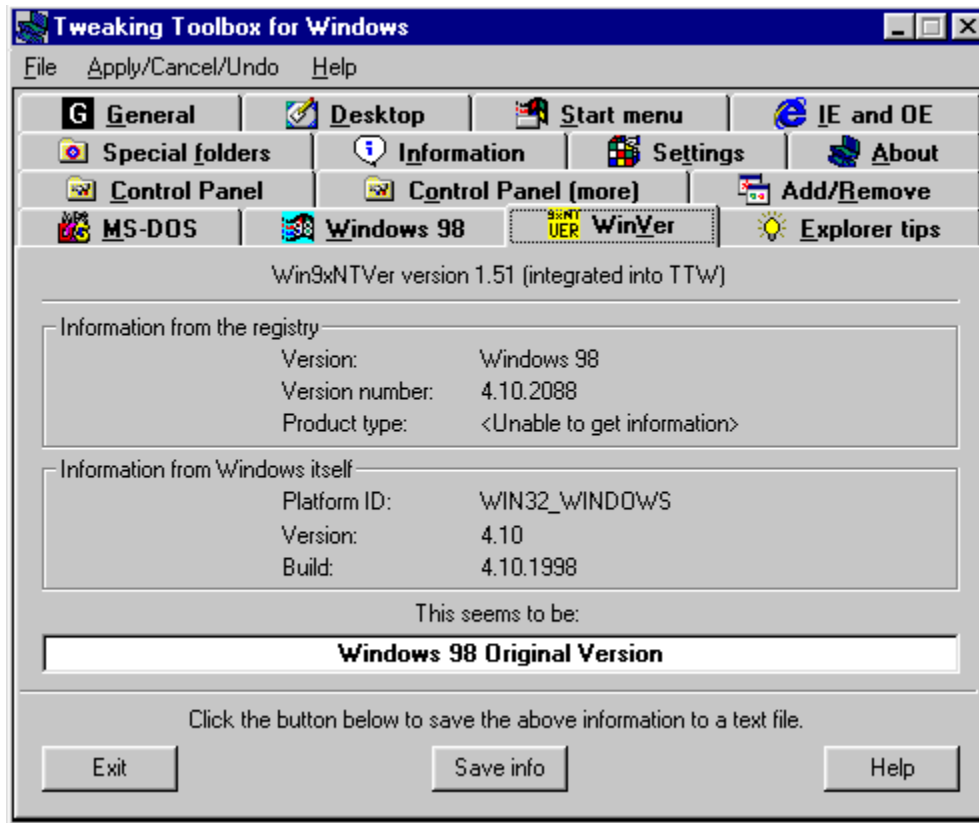
With the **Maximum number of profiled applications** you can control the maximum amount of applications to be optimised. Programs are optimised in descending order of usage counts, up to this max. number. If you use the value 0, this parameter is ignored.

**Note I: This tab is only active on systems running Windows 98.**

**Note II: This requires a re-logon to take effect.**

**Note III: this item will be greyed out in the shareware version.**

## WinVer



### Operating Systems:

Windows 95: Yes  
Windows 98: Yes  
Windows NT: Yes

Every day I see several people ask how to determine which version of Windows 95 they are running. The main problem is that Windows 95 itself does not clearly indicate this. In addition, Windows contains a lot of conflicting information.

For instance, the original OSR2.1 version (yes, there are two different versions of OSR2.1) of Windows 95 shows 4 different version numbers depending on where you look:

- 4.00.950 B (System Properties)
- 4.00.1111 (VER command from a DOS window)
- 4.00.1212 B (Update Information Tool (QFEcheck.exe))
- 4.03.1212 B (Version information in the registry)

In addition, some of these numbers are the same as those displayed by different versions of Windows 95...

WinVer is the easiest way of determining which version of Windows 95 you are running. WinVer distinguishes between the following versions of Windows 95 (listed from oldest to newest):

- Windows 95 Original Version
- Windows 95 OSR1 (Windows 95 Original Version plus Service Pack 1)

- Windows 95 OSR2
- Windows 95 OSR2.1 Original (version 4.03.1212)
- Windows 95 OSR2.1 QFE (version 4.03.1214)
- Windows 95 OSR2.5 without USB support
- Windows 95 OSR2.5

The information displayed by WinVer can be saved to a text file by clicking the Save info button.

Although originally meant for Windows 95 only (it was originally called “Win95Ver”), WinVer also recognises Windows 98 (both Original Version and Second Edition) and Windows NT. In the case of Windows NT, Win9xNTVer will also distinguish between Server and Workstation, between Service Packs, and between Windows NT 5.0 (Windows 2000) betas.

In the case of Windows 2000, please note that at some point in between betas 2 and 3, Microsoft decided to change this product’s name from “Windows NT 5.0” to “Windows 2000”. When using WinVer, this means that all builds before build number 2000 (which includes beta 2) will be identified as “Windows NT 5.0”, while all builds starting with build number 2000 (which includes beta 3) will be identified as “Windows 2000”. Also note that with Windows 2000, “Workstation” has been renamed to “Professional”.

For some of the items it displays, WinVer may not be able to retrieve the information; it will display “<Unable to get information>” for those items. Please realise that it is normal that WinVer cannot get some of the information, because some items only apply to certain operating systems. Depending on the operating system, different items will display the “<Unable to get information>” message.

## Unrecognised versions of Windows 95

Quite a few people have accidentally installed Service Pack 1 on OSR2 (or higher) systems. I say "accidentally" because you **should not install Service Pack 1 on OSR2 or higher!!!** WinVer will report these "versions" of Windows 95 as unrecognised. The most common case is that Service Pack 1 was installed on OSR2; in this case, the information displayed by WinVer will read as follows:

Information from the registry:

Version: Windows 95  
 Version number: 4.00.1111a  
 Product type: <Unable to get information>

Information from Windows itself:

Platform ID: WIN32\_WINDOWS  
 Version: 4.00  
 Build: 4.00.1111

We **think** (but have not actually tried it) that Service Pack 1 is smart enough to not replace newer versions of files with older ones. If you happened to install Service Pack 1 on OSR2 or higher, then use the table below to check if you still have the correct versions of the files that come with Service Pack 1. For each of these files, choose Properties, go to the Version tab, and look at the number displayed for File version. If a version number for a file currently on your computer is **lower** than listed here, you have to extract the correct version from the .CAB files on your Windows 95 CD. If a version number for a file currently on your computer is **the same or higher** than listed here, then leave that file alone. The table below assumes you have Windows 95 installed in the C:\WINDOWS directory; adjust if necessary.

4.00.951	C:\WINDOWS\SYSTEM\COMDLG32.DLL
4.00.953	C:\WINDOWS\SYSTEM\LPT.VXD
4.00.952	C:\WINDOWS\SYSTEM\MSPWL32.DLL
4.00.951	C:\WINDOWS\SYSTEM\NWSERVER.VXD
2.1	C:\WINDOWS\SYSTEM\OLE32.DLL
4.40.311	C:\WINDOWS\SYSTEM\SAGE.DLL
4.00.1111	C:\WINDOWS\SYSTEM\SHELL32.DLL
4.00.1111	C:\WINDOWS\SYSTEM\VREDIR.VXD
4.00.1111	C:\WINDOWS\SYSTEM\VSERVER.VXD

Finally, to have the system identify itself correctly once again (so that WinVer will recognise it and so that the System Properties show the correct version), go to the following location in the registry (**only do this if you accidentally installed Service Pack 1 on OSR2 or higher!!!**):

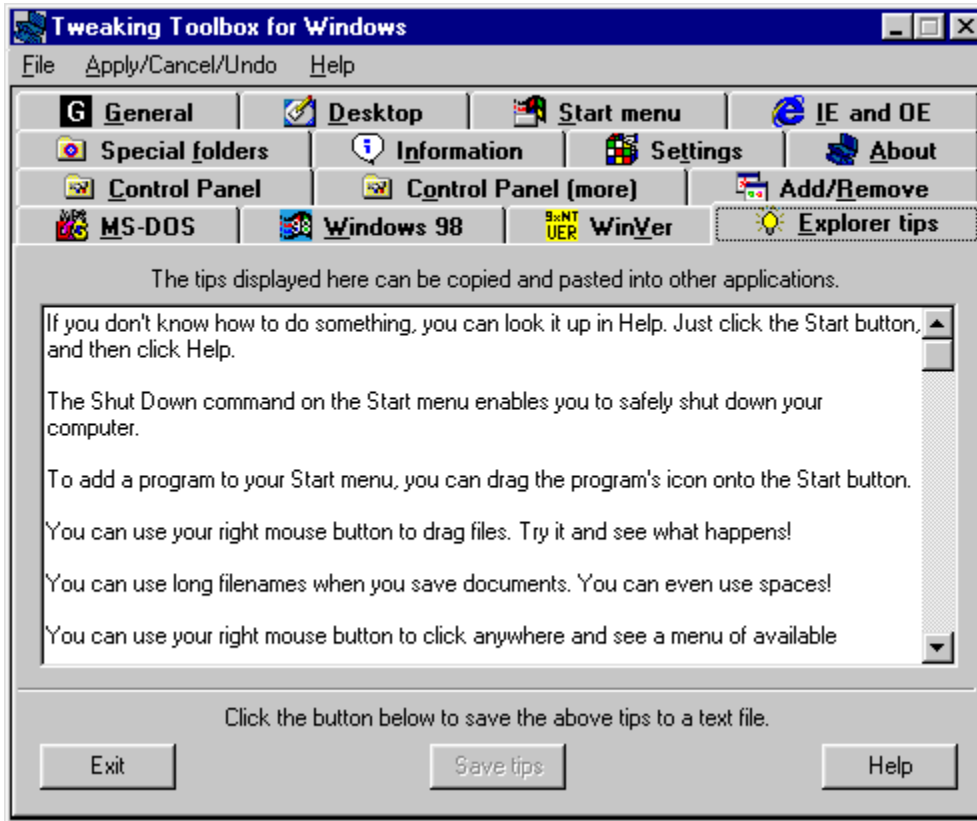
**HKEY\_LOCAL\_MACHINE \ SOFTWARE \ Microsoft \ Windows \ CurrentVersion**

and set the string **SubVersionNumber** to the value “ **B**”. Note that there is a space before the B. Those who installed Service Pack 1 on OSR2.5 should set the string **SubVersionNumber** to the value “ **C**” (again, note the leading space) instead.

**Note: It is normal that you see <Unable to get information> for the Product type under the Information from the registry. The Product type is only displayed for Windows NT.**



## Explorer tips



### Operating Systems:

Windows 95: Yes

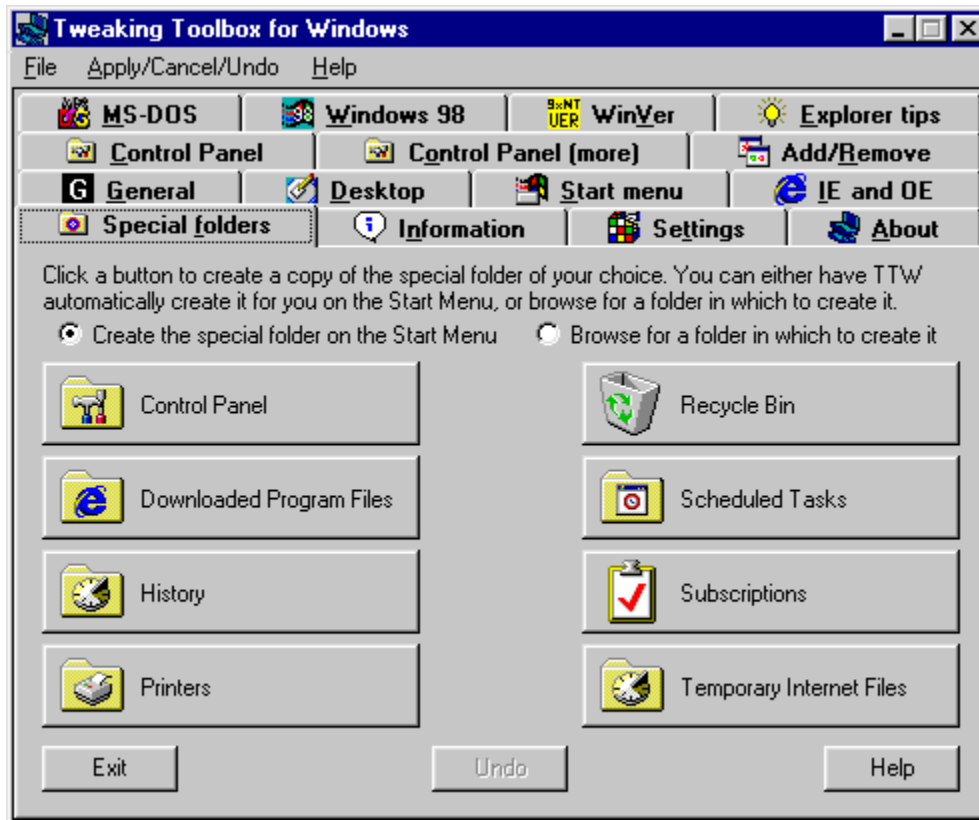
Windows 98: No

Windows NT: 4.0 Service Pack 3 or higher

Displays the Explorer tips found in the Windows registry.

**Note: By default, these tips are not present on Windows 98. TTW will display <FAILED TO RETRIEVE TIPS FROM THE REGISTRY>**

## Special folders



### Operating Systems:

Windows 95: Yes

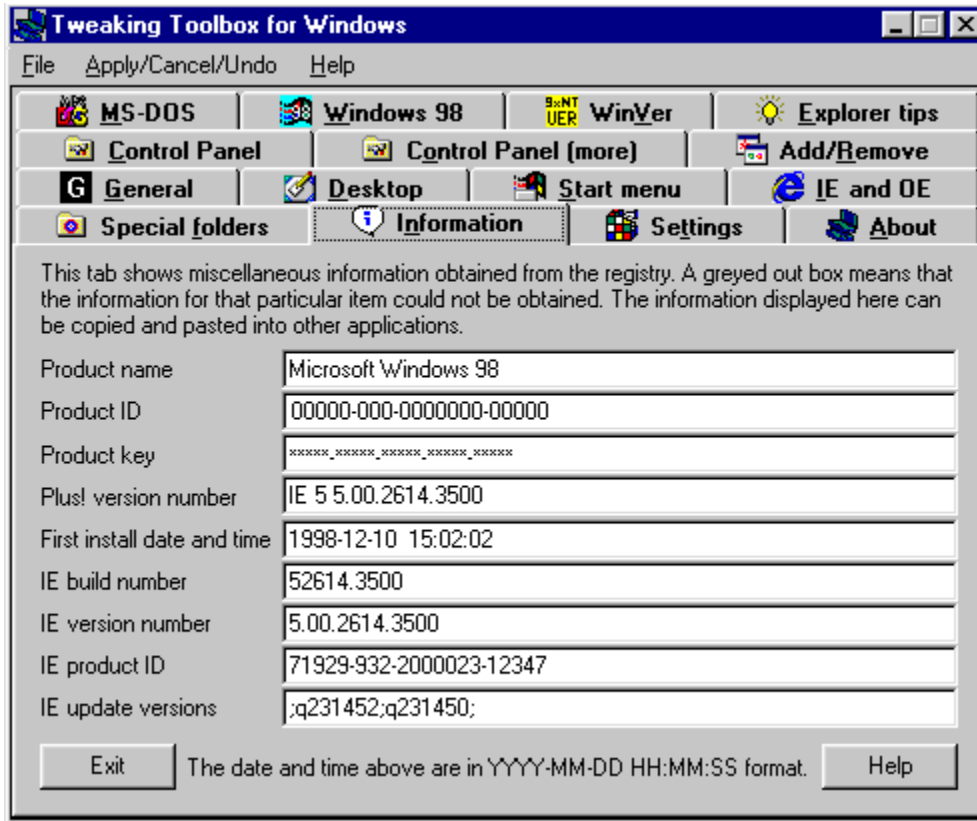
Windows 98: Yes

Windows NT: 4.0 Service Pack 3 or higher

On this tab you can create the Special Windows folders wherever you want them. By checking the box **create on Start menu**, the folder you choose will be added to the start menu.

**Note: When Internet Explorer 5 is installed, and you create Special folders on the Desktop, they will be empty.**

## Information



### Operating Systems:

Windows 95: Yes

Windows 98: Yes

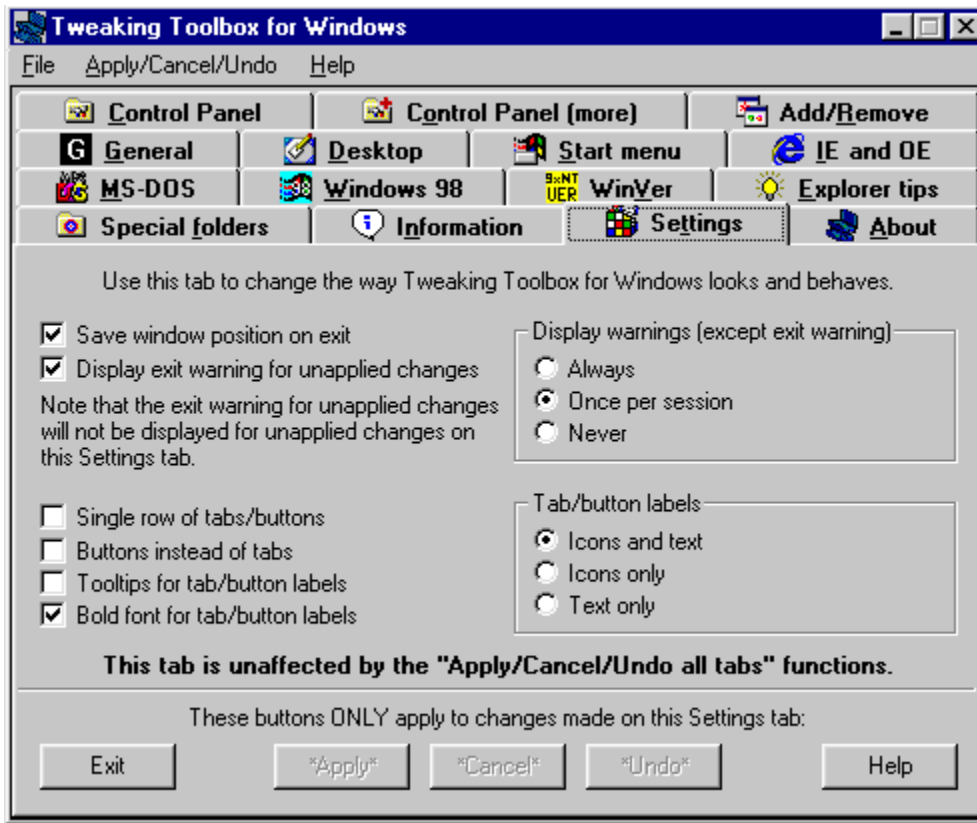
Windows NT: 4.0 Service Pack 3 or higher

This tab shows miscellaneous information obtained from the registry. Items for which the information could not be obtained are greyed out. The information displayed here can be copied and pasted in other applications.

### Note: On Windows NT the following items are not available:

- Product name
- Product key
- First install date and time

## Settings



The Settings tab lets you change the appearance of Tweaking Toolbox for Windows, and certain other behaviours.

### Save window position on exit

If checked, TTW will remember its position on your screen, and will open in the same place the next time you run the program.

### Display exit warning for unapplied changes

If checked, TTW will display a warning when you try to exit the program - but only if you made any changes during the current session, and haven't used the **Apply** or **Apply all tabs** function

### Single row of tabs

When checked, TTW will only display a single row of tabs/buttons, with a scroll control at the top right corner to scroll to tabs/buttons not visible.

### Buttons instead of tabs

When checked, TTW will display buttons instead of tabs

### Tooltips for tab labels

When checked, TTW will display tooltips when hovering the mouse cursor over a tab/button, with the descriptive text for that tab/button.

### Bold font for tab labels

When checked, TTW will use a **bold** font for tab/button labels

### Display warnings (except exit warning)

Here you can set the level of warnings TTW will give you for certain settings. Choices are **Always**, **Once per session** and **Never**.

### Tab labels

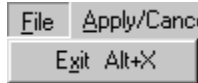
Used to further customise the display of TTW, this influences information displayed by TTW's tabs/buttons. Choices are **Icons and text**, **Icons only** and **Text only**

**Note: Saving the settings only works when Tweaking Toolbox for Windows is installed on the system. If you run TTW.exe without installing it, you cannot save these settings.**

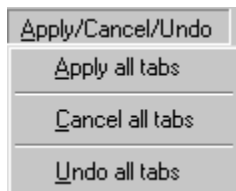
## Tweaking Toolbox for Windows menu bar

The menu bar of Tweaking Toolbox for Windows has 4 entries:

File, Apply/Cancel/Undo, Settings and Help. Here is a short description of their functions.



The **File** menu only has one entry **Exit**, and it does exactly what it's supposed to do: It exits the program. Note that if you made any changes without pressing the **Apply** button, or selecting the **Apply all tabs** setting from the Apply/Cancel/Undo menu, these changes are disregarded.



The **Apply/Cancel/Undo** menu has 3 entries, **Apply all tabs**, **Undo all tabs**, and **Cancel all tabs**. Here is how they work.

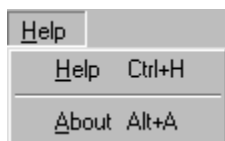
The **Apply all tabs** processes all changes made on all the tabs in the current session.

The **Cancel all tabs** cancels all changes made during the current session can be undone from here. Cancel only works if changes were not applied. If changes made were already applied (by hitting **Apply**, you can use the **Undo all tabs** function).

The **Undo all tabs** works from when the Tweaking Toolbox for Windows was started. Any changes made during the current session can be undone from here (even if you already hit **Apply**).

**Note that the Cancel/Undo functions only apply for the current session of TTW.**

*(the **Apply/Cancel/Undo** functions are a feature of the [registered](#) version only)*



The **Help** menu has two entries, **Help** and **About**. Help starts this help file, while **About** brings up the Tweaking Toolbox for Windows About tab.

## Uninstalling

The Tweaking Toolbox for Windows Setup creates an entry in the **Add/Remove Programs** section of **Control Panel**. To uninstall, simply select this entry and click the **Add/Remove** button.

You can also use the shortcut created in the Tweaking Toolbox for Windows folder on the Start menu to uninstall the program.

Unlike a lot of uninstall programs out there, TTW really uninstalls itself. A lot of uninstall programs do not delete themselves when the product is being uninstalled, which results in unused files usually located in the Windows directory. TTW also deletes its uninstall program.

## Register

For more information and to Register, please visit:

<http://www.graphic-locomotion.com/graphics/ttw.html>

or

<http://www.windows-help.net/ttw/>

Or register on-line (direct download of registered version):



If you want to order by fax, see <http://windows-help.net/ttw/fax-order.html>

---

Once you register, you will be offered a new download of TTW. **You must download this version.** TTW doesn't work with registration codes, but with a separate registered version.

Once you have downloaded the registered version, you can just install this version "on top" of the existing TTW. If you want to install TTW in **another** directory however, you must first **uninstall** the trial version.

## Upgrades

As long as we have a valid e-mail address in our database (for registered users), we will send you notifications about upgrades, and/or the actual upgrade attached as an e-mail attachment.

You can change your e-mail address in our database by filling out the form at <http://www.windows-help.net/ttw/upgrades.html>



Please note that we will only process your request if you **include** your **customer** or **order** number. These numbers can be found in the e-mail you received when you registered the product.

## Credits

Special thanks go to the following people

Urban Andersson  
Dennis Cummins  
David Lawrance  
David Ries  
Helge Stenwig

Who provided valuable input in the development of this program

We also want to thank these people who where a great help during beta testing of this program:

Rachel Jacklyn Bilodeau  
Eric Bursley  
Harland Dains  
Shane Dale  
José Miguel Morales Farreras  
Pam Lansdowne  
Bob Renaud  
Kevin Riley  
Steve C Tuffill

## Version History



### V1.60: 03 December 1999

- TTW can now also be launched through the Control Panel (a Control Panel applet called "Tweaking Toolbox" is added when TTW is installed)
- Added a new tab: "Add/Remove"
- Added a new tab: "Control Panel (more)"
- Added a new tab: "Explorer tips"
- Added a new tab: "Settings" (used to change the way TTW looks and behaves)
- "General" tab: Added "Name for MS software setup" and "Company for MS software setup"
- "Desktop" tab: Unchecking "Show all icons on the desktop" will now cause the items above it to be greyed out
- "Start menu" tab: Added the ability to show and hide the "Taskbar & Start Menu" entry on the Settings menu
- "Start menu" tab: Added the ability to show and hide all the folders on the Settings menu
- "Control Panel" tab: Unchecking "Display Control Panel" or "Password Control Panel" will now cause the respective items underneath them to be greyed out
- "MS-DOS" tab: The "Apply", "Cancel", and "Undo" buttons are now disabled when running on Windows NT
- "Windows 98" tab: The "Apply", "Cancel", and "Undo" buttons are now disabled when not running on Windows 98
- "Windows 98" tab: All items require a re-logout for changes to take effect; earlier versions did not take this into account
- "Special folders" tab: Added the ability to delete (by clicking the "Undo" button) all special folders that have been created
- Renamed the "Windows version" tab to "WinVer"
- Removed "Undo current tab" from the "Apply/Undo" menu and added an "Undo" button to all applicable tabs
- Added "Cancel all tabs" to the "Apply/Undo" menu and renamed that menu to "Apply/Cancel/Undo"
- Added "Exit" and "Help" buttons to all tabs
- The "Apply", "Cancel", and "Undo" buttons now only are enabled when applicable
- The "Help" button on each tab gives help on that particular tab. Alternatively, the F1 key can be used for this
- Following the Windows standard, when cycling through controls on a tab using the Tab and Shift-Tab keys, the tab itself (the name of the tab) is now included in the cycle
- Following the Windows standard, Ctrl-Tab and Ctrl-Shift-Tab can now be used to cycle through the tabs
- The edit boxes on the "Information" tab now have the default background colour for edit boxes to make it clearer that the information can be copied from them
- Updated the "WinVer" tab with Win9xNTVer version 1.52 (replacing Win95Ver version 1.43). The changes related to this:
  - Changed the name from "Win95Ver" to "Win9xNTVer" and changed the icon accordingly
  - Added "Product type" to the information displayed
  - The edit box displaying the determined version of Windows now has the default background colour for edit boxes to make it clearer that the information can be selected and copied from it
  - The information displayed at "Version", "Version number", "Product type", "Platform ID", "Version", and "Build" can now be selected and copied as well
  - Now distinguishes between Windows 98 Original Version and Windows 98 Second Edition
  - Now also distinguishes between Windows NT Workstation and Windows NT Server
  - Now also recognises Windows 2000 beta 3
  - Slightly modified the display in case some information could not be retrieved
- TTW is compatible with Windows NT 4.0 (Service Pack 3 or higher recommended) and higher now. In addition, the functions that do not apply to Windows NT will now be disabled when running on Windows NT
- A few items require only a restart under certain conditions; this is now handled in a smart and correct way

- If the help file is open when File|Exit is used, it now closes
- Made some small cosmetic improvements
- Made several corrections and additions to the help file
- Uninstall: Now refreshes the Control Panel, so if the Control Panel is open while uninstalling TTW, the TTW icon will disappear from the Control Panel



### **V1.20: 17-Apr-1999**


- Made TTW wider in order to fit more items on each tab
- Added a new tab: "Special folders"
- "About" tab: The icons are now animated
- "About" tab: Added a link to the TTW registration page (trial/shareware version only)
- "Control Panel" tab: Added the ability to show and hide the Device Manager tab
- "Control Panel" tab: Added the ability to show and hide the Web tab
- "Control Panel" tab: Added the ability to show and hide the Plus! (Windows 95) or Effects (Windows 98) tab
- "Desktop" tab: Added the ability to rename the Recycle Bin directly
- "Desktop" tab: Added the ability to show and hide the Recycle Bin
- "Desktop" tab: Renamed "Enable renaming of the Recycle Bin" to "Show "Rename" on Recycle Bin's context menu"
- "IE and OE" tab: Now fully functional with Internet Explorer 5.0 as well
- "Information" tab: Added "IE build number", "IE version number", "IE product ID", and "IE update versions"
- "Start menu" tab: "Log Off <username>" now shows the actual username if possible
- "Start menu" tab: Added the ability to show and hide the "Click here to begin" animation
- "Start menu" tab: Added the ability to change the menu speed
- Updated the "Windows version" tab with Win95Ver version 1.43 (replacing version 1.41). The change related to this:
  - Because the version identification text (under "This seems to be:") is displayed in bold now, the full description of OSR1 did not fit in that box. In addition, that area did not scroll so the invisible part could not be made visible. Both problems are fixed now
  - In case there is no space in front of the "B" or "C" (Windows 95 OSR2 or higher), Win95Ver will now still recognise the version. For some reason, there are quite a lot of systems out there running OSR2 or higher that do not have the space in front of the letter. That is why Win95Ver will now recognise both cases.
- Made lots of small improvements to the help file
- Made several small improvements related to disabling items if the information could not be found in the registry
- Fixed a memory leak that could cause the machine to run out of memory if certain functions of TTW were used for hours on end during one session
- In most cases, TTW no longer requires a Windows restart for changes to take effect, but will prompt for (and execute, if so desired) a re-logon. This is only available in the full/registered version of TTW; the trial/shareware version still performs a Windows restart



### **V1.10: 10-Jan-1999**

- Name changed from "Windows Tweaking Toolbox" (WTT) to "Tweaking Toolbox for Windows" (TTW)
- Added icons to identify each tab
- Changed TTW's icon
- Added a new tab: "Information"
- Updated the "Windows version" tab with Win95Ver version 1.41 (replacing version 1.30). The changes related to this:
  - Now also recognises Windows NT 5.0 beta 1 and higher
  - No longer displays the "0.00." in front of the build number on Windows NT

- Added “Platform ID” to the information displayed
- The version identification text (under “This seems to be:”) is now displayed in bold and can be copied and pasted into other applications

 **V1.00: 16-Aug-1998**

- Initial version.

## Support

Tweaking Toolbox for Windows is supported through e-mail.

Please send your questions/bug reports to [ttw@windows-help.net](mailto:ttw@windows-help.net)

Please include as much information as possible before contacting us:

- Are you referring to the registered version or the trial version?
- Where did you download the program?
- What is your operating system (version number)?
- Which Web browser do you use, and what is the version number?
- A description of the problem, and what you did prior before it happened (installed new software e.g.).

